

Analytical and bioanalytical Chemistry

Electronic Supplementary Material

VOC-based metabolic profiling for food spoilage detection with  
the application to detecting *Salmonella typhimurium* contaminated  
pork (Supplementary information)

Yun Xu, William Cheung, Catherine L Winder, and Royston Goodacre

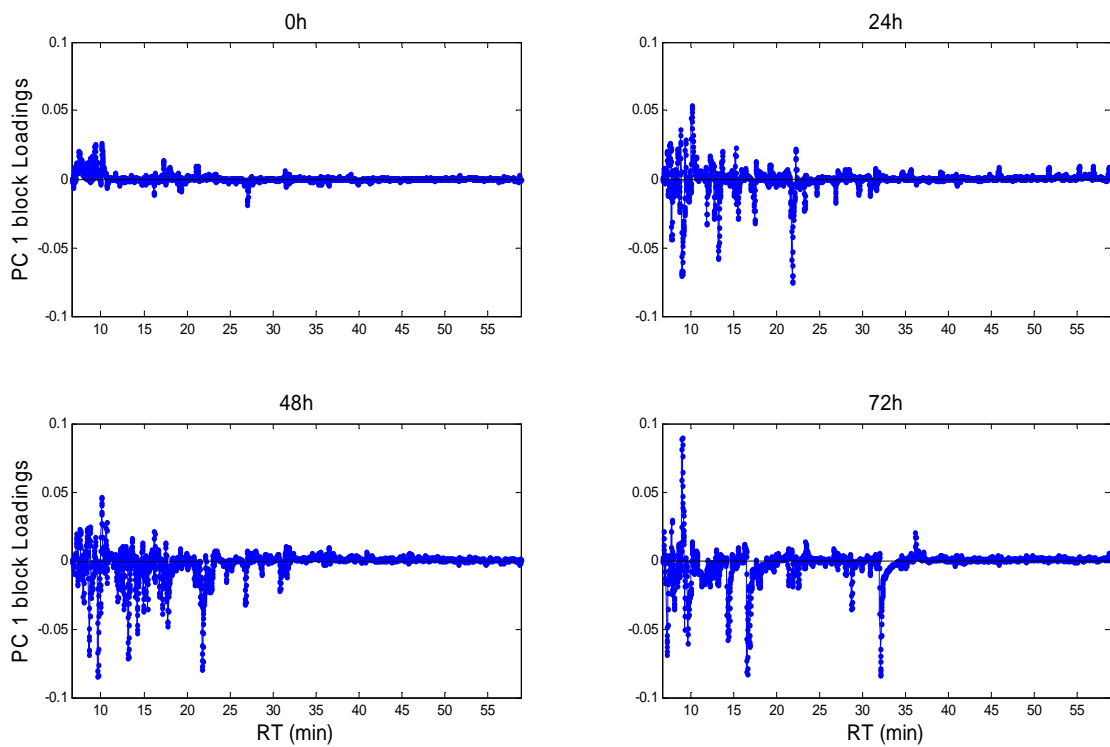


Fig. S-1: Block loadings plot of the first CPCA model.

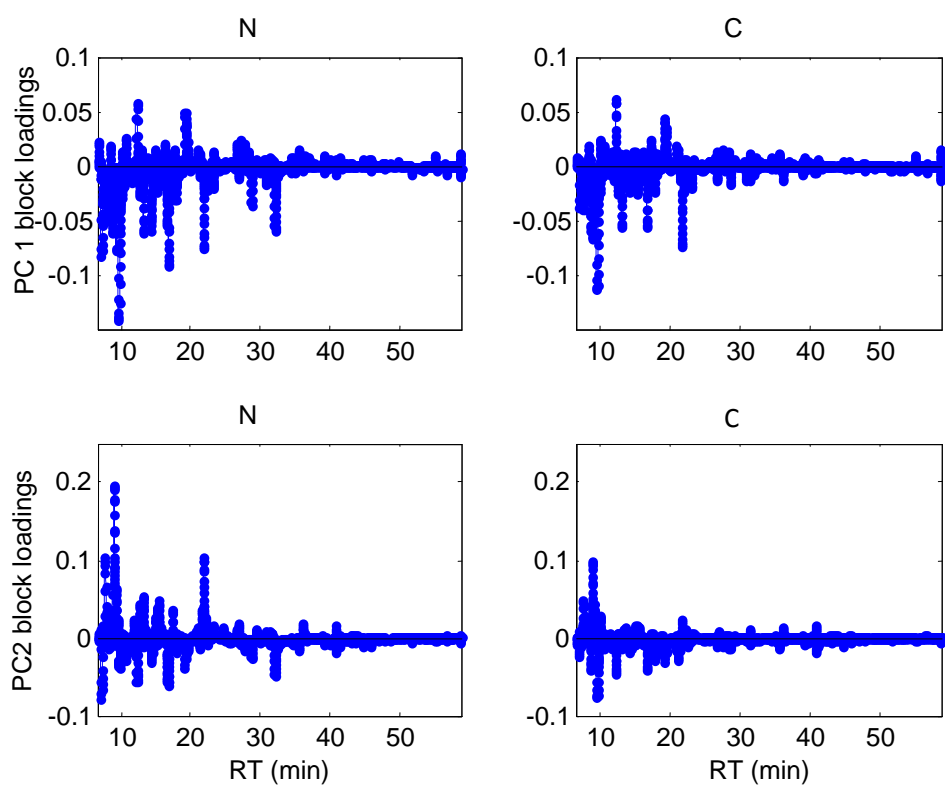


Fig. S-2: Block loadings plot of the second CPCA model.

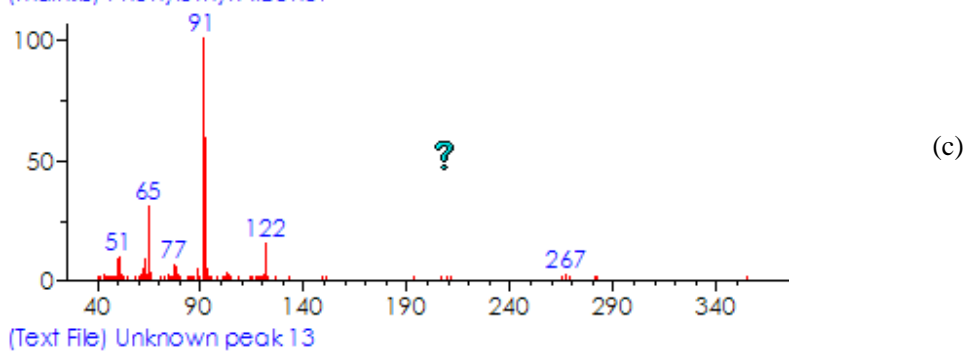
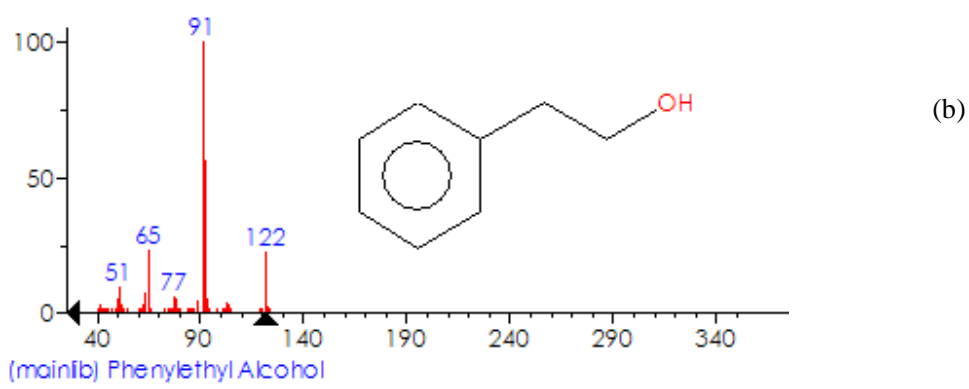
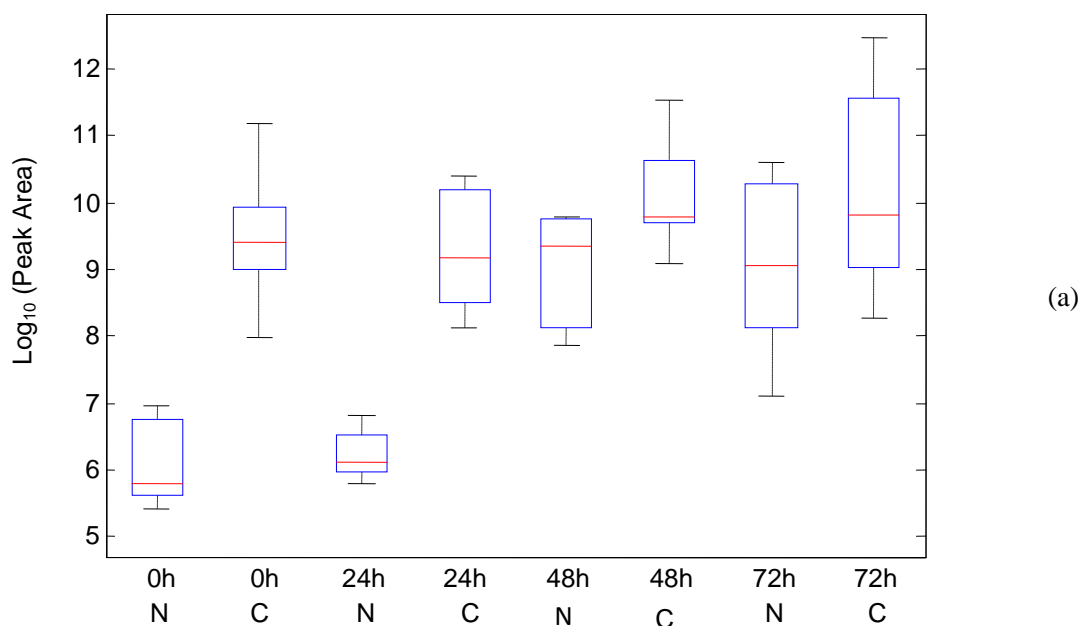


Fig. S-3: (a) Box-whisker plot; (b) Standard mass spectrum; (c) Extracted mass spectrum of the target peak.

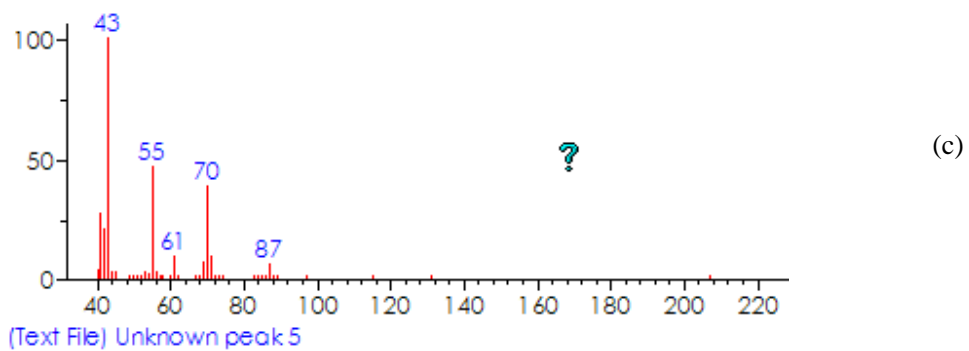
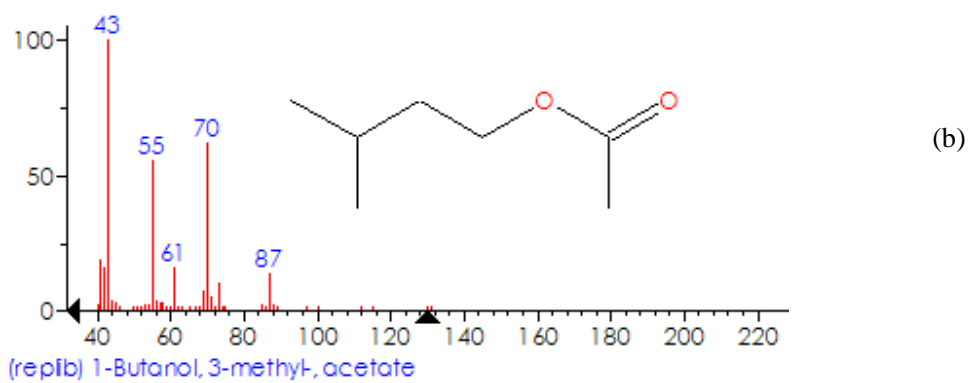
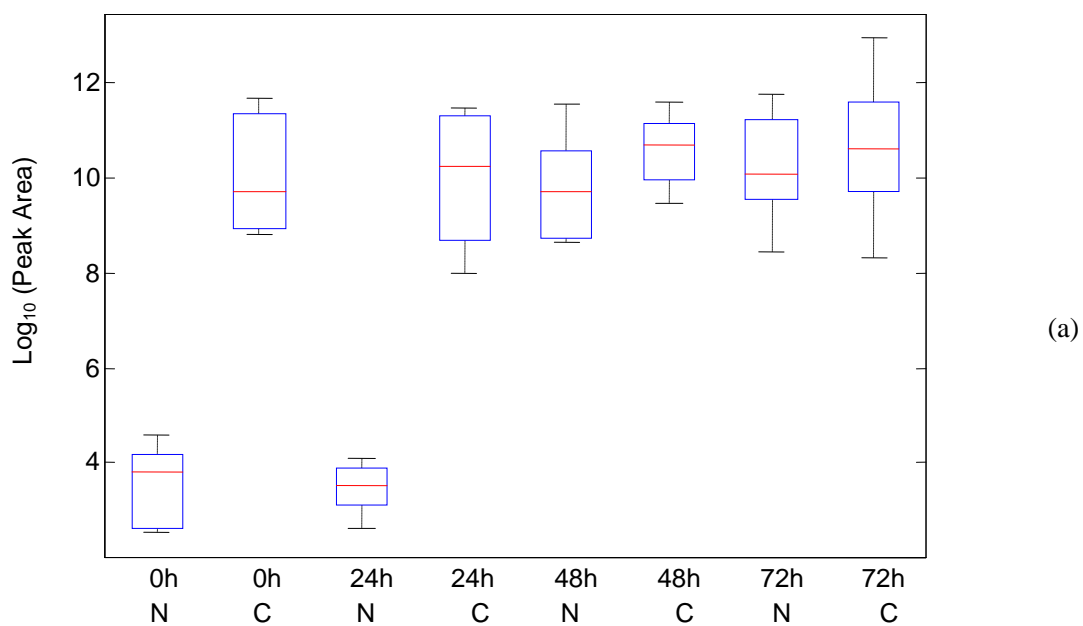


Fig. S-4: (a) Box-whisker plot; (b) Standard mass spectrum; (c) Extracted mass spectrum of the target peak.

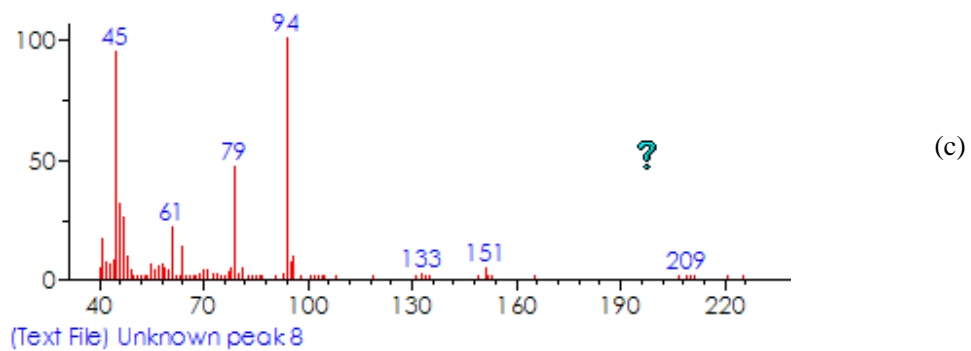
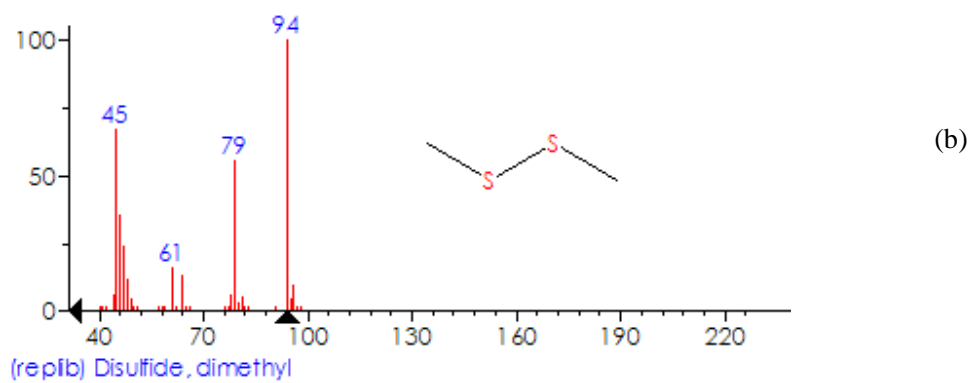
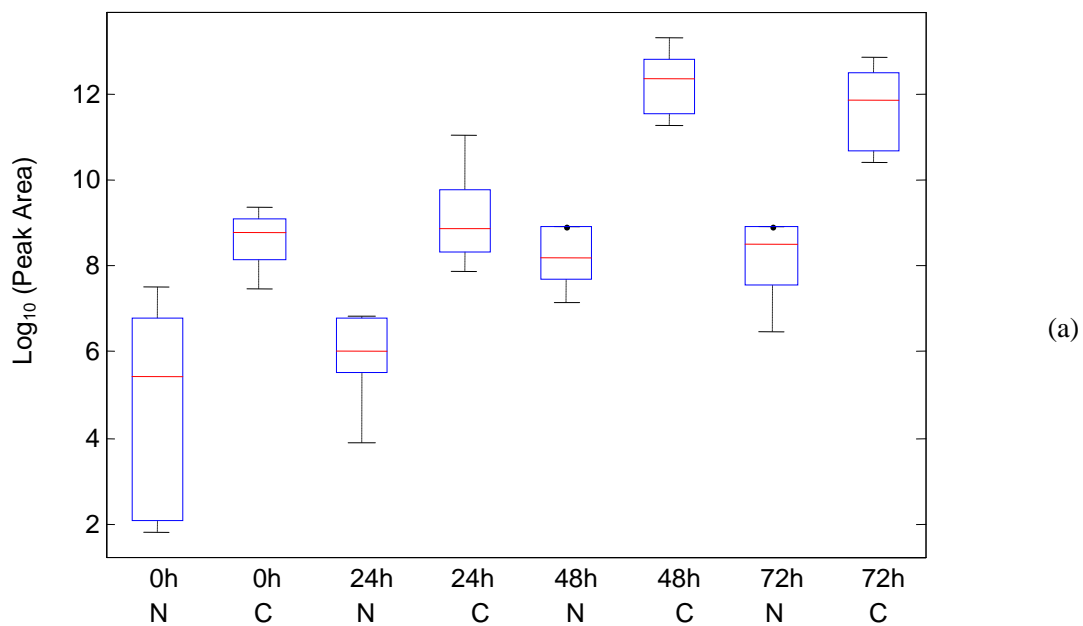


Fig. S-5: (a) Box-whisker plot; (b) Standard mass spectrum; (c) Extracted mass spectrum of the target peak.

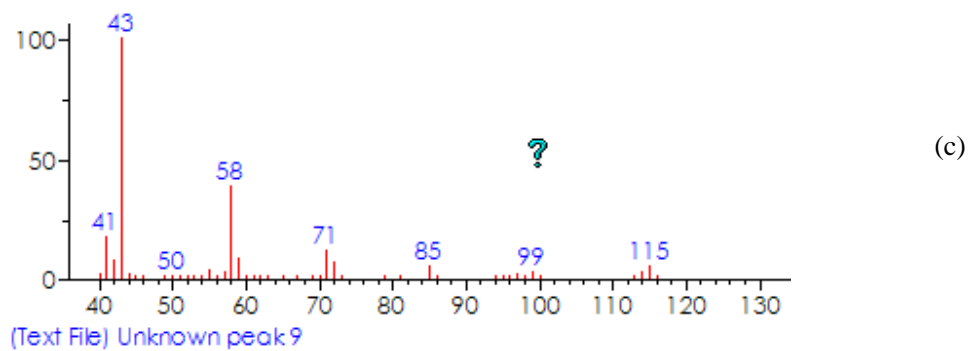
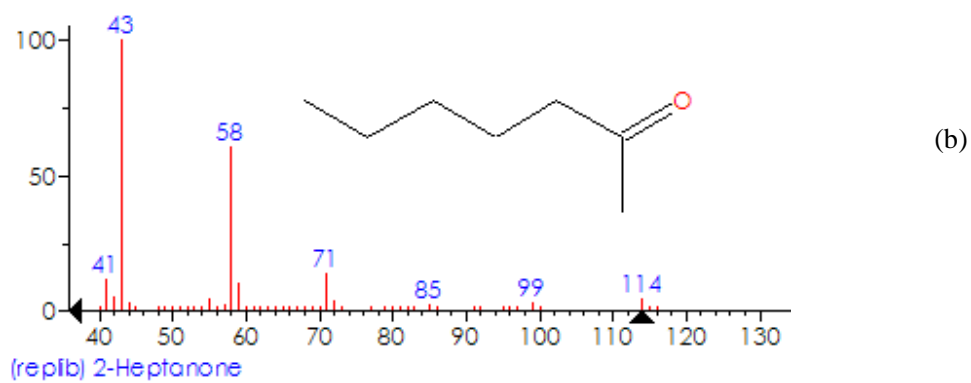
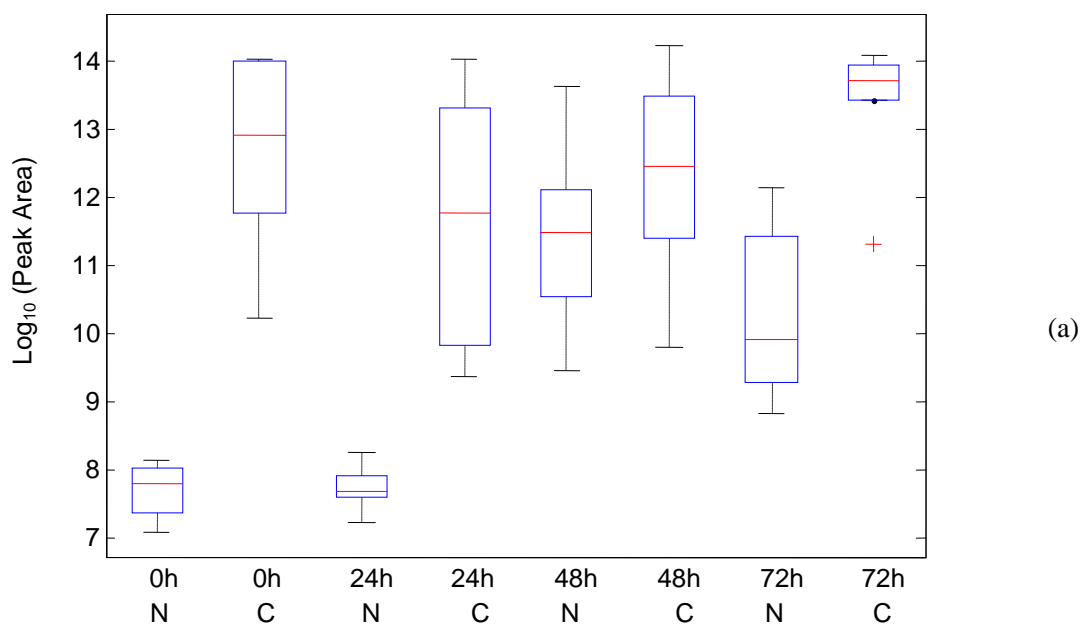


Fig. S-6: (a) Box-whisker plot; (b) Standard mass spectrum; (c) Extracted mass spectrum of the target peak.

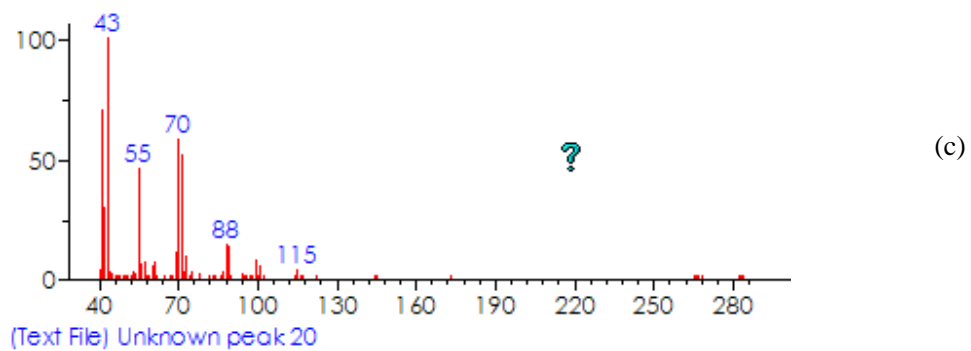
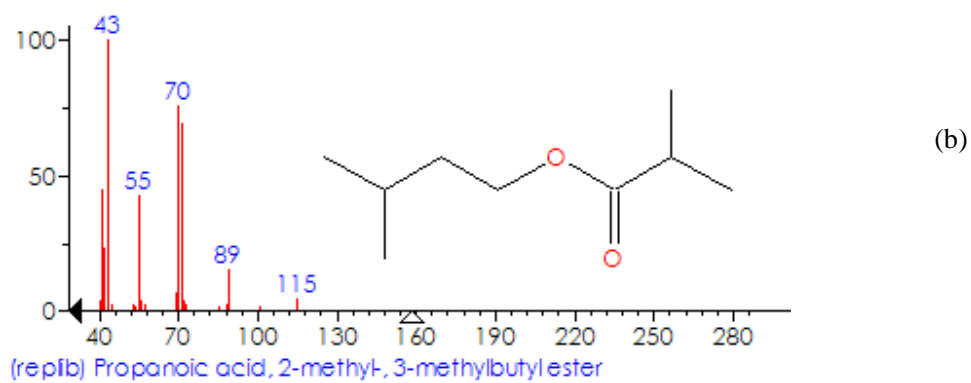
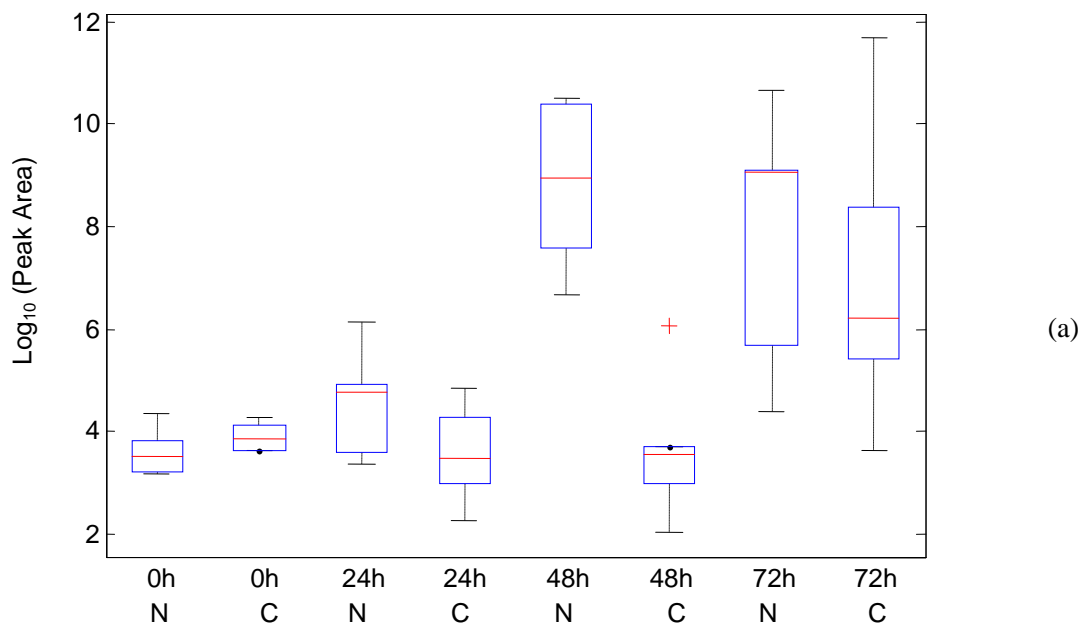


Fig. S-7: (a) Box-whisker plot; (b) Standard mass spectrum; (c) Extracted mass spectrum of the target peak.

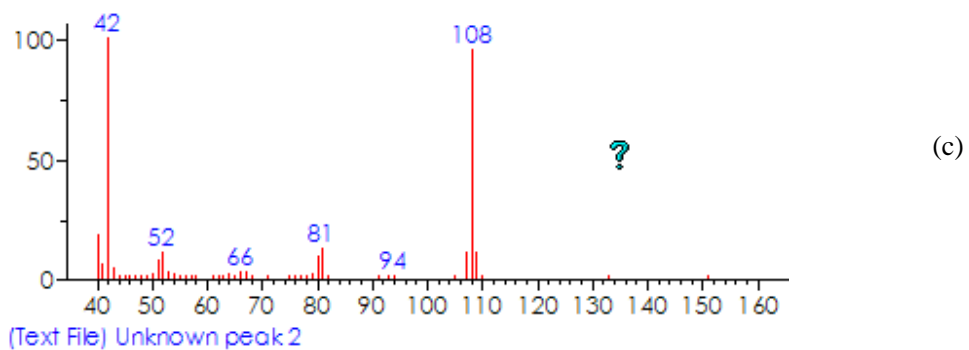
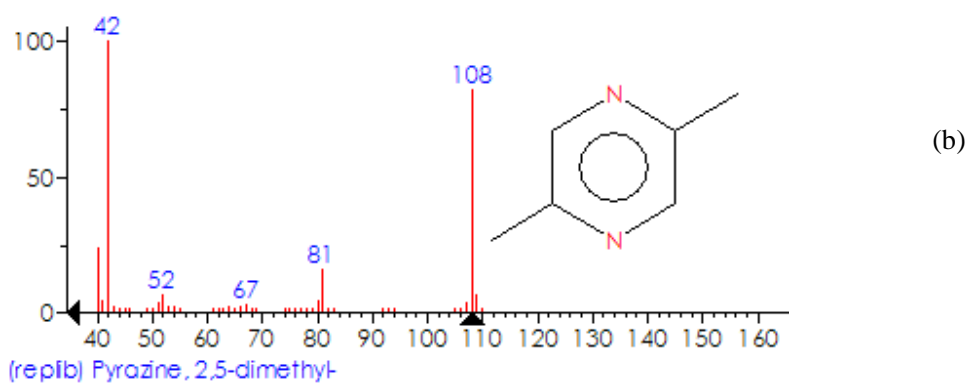
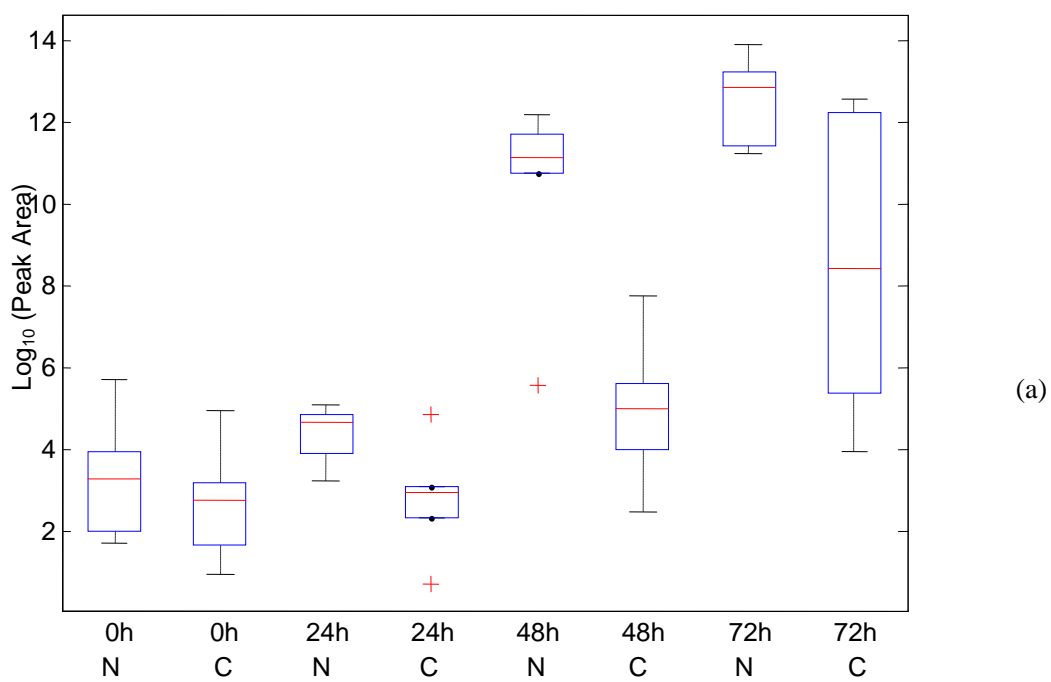


Fig. S-8: (a) Box-whisker plot; (b) Standard mass spectrum; (c) Extracted mass spectrum of the target peak.



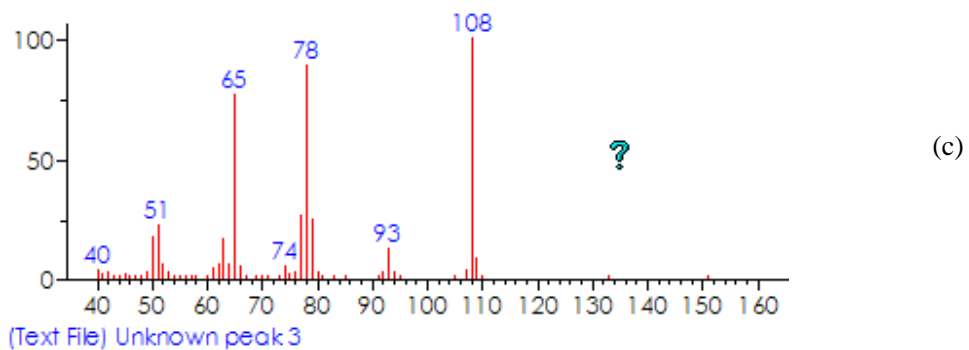
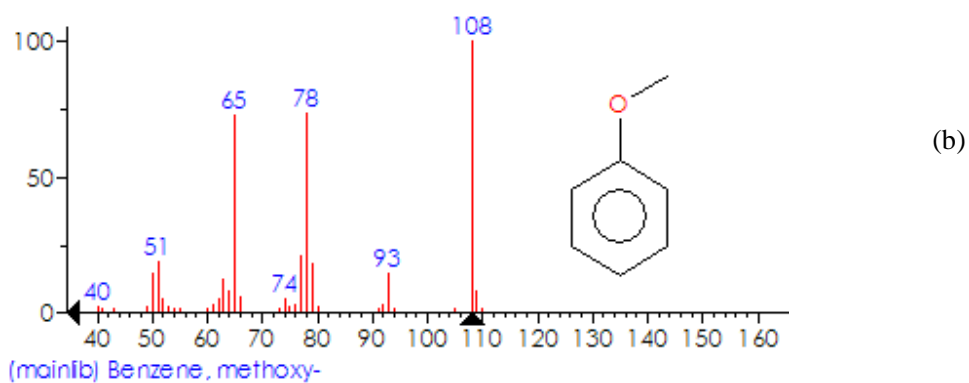
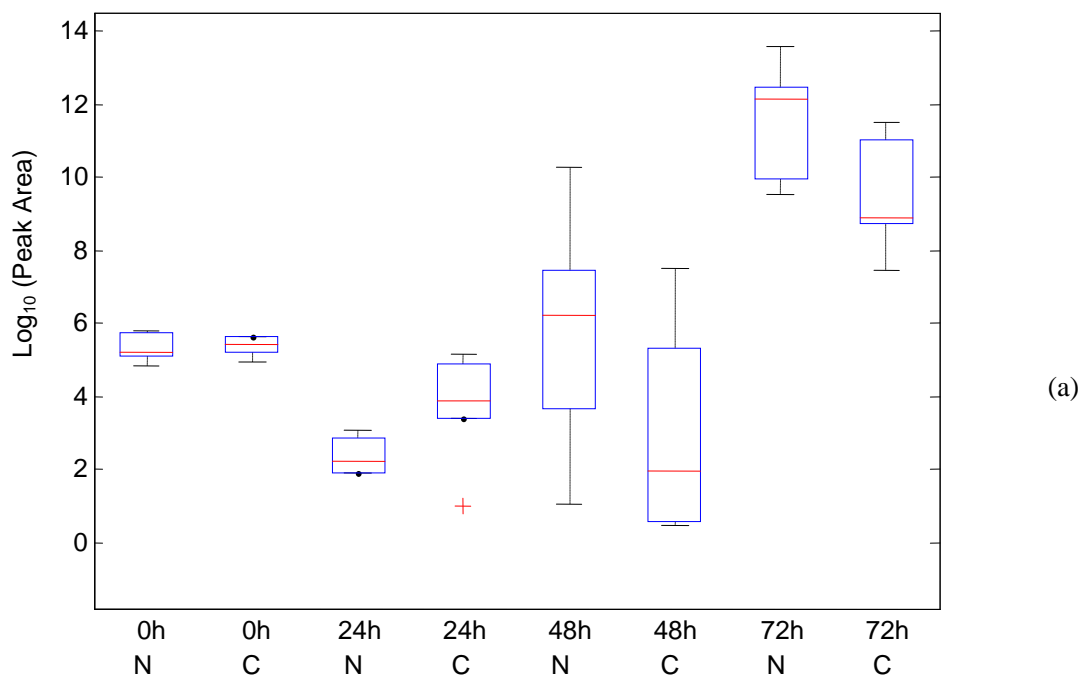


Fig. S-9: (a) Box-whisker plot; (b) Standard mass spectrum; (c) Extracted mass spectrum of the target peak.

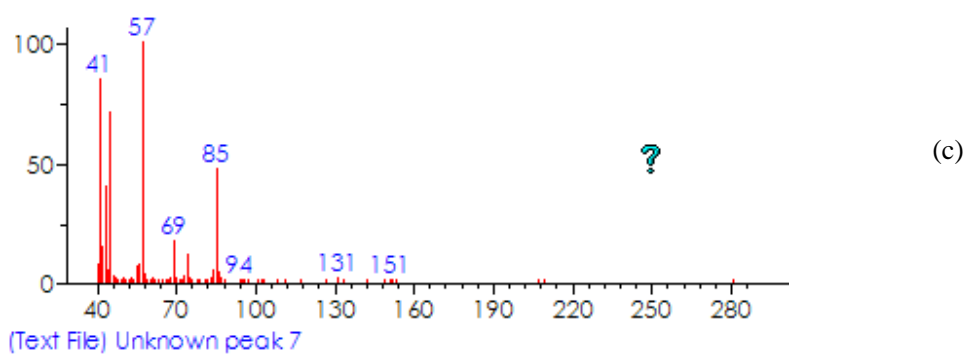
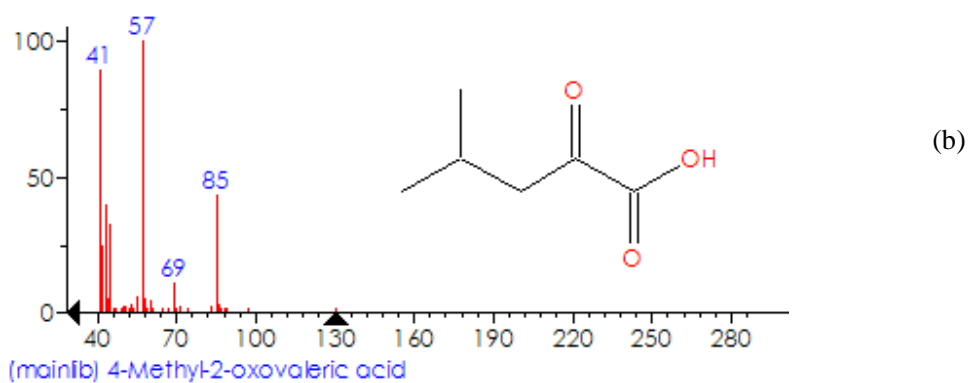
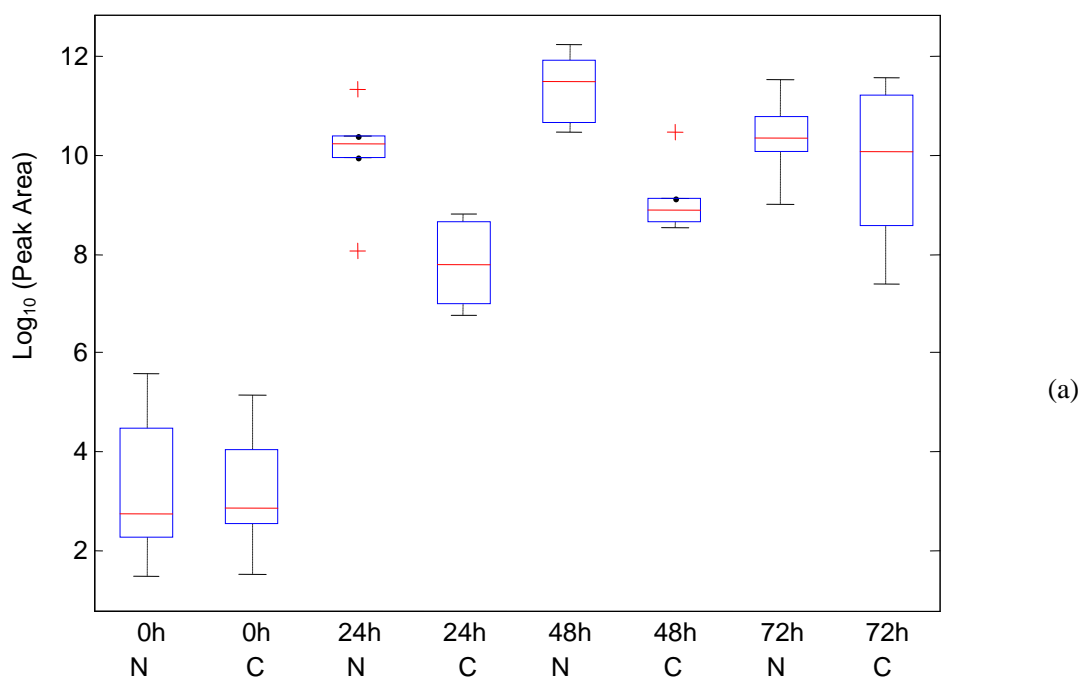


Fig. S-10: (a) Box-whisker plot; (b) Standard mass spectrum; (c) Extracted mass spectrum of the target peak.

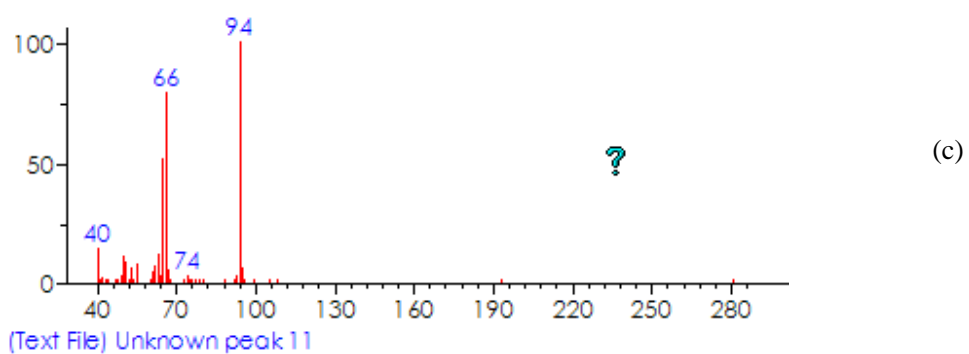
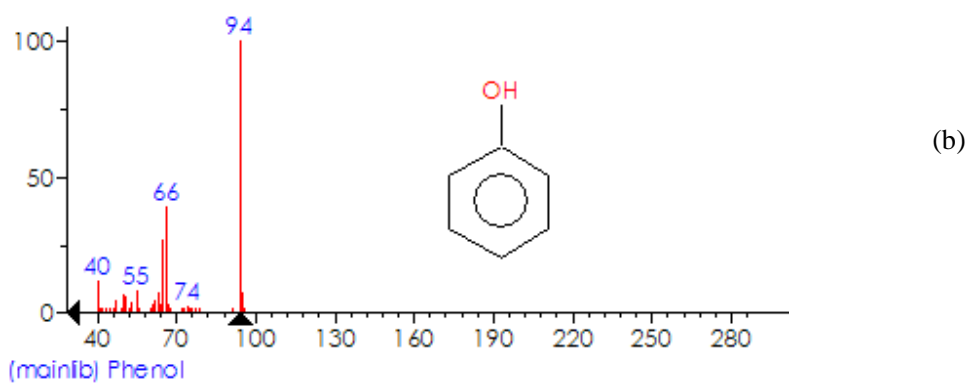
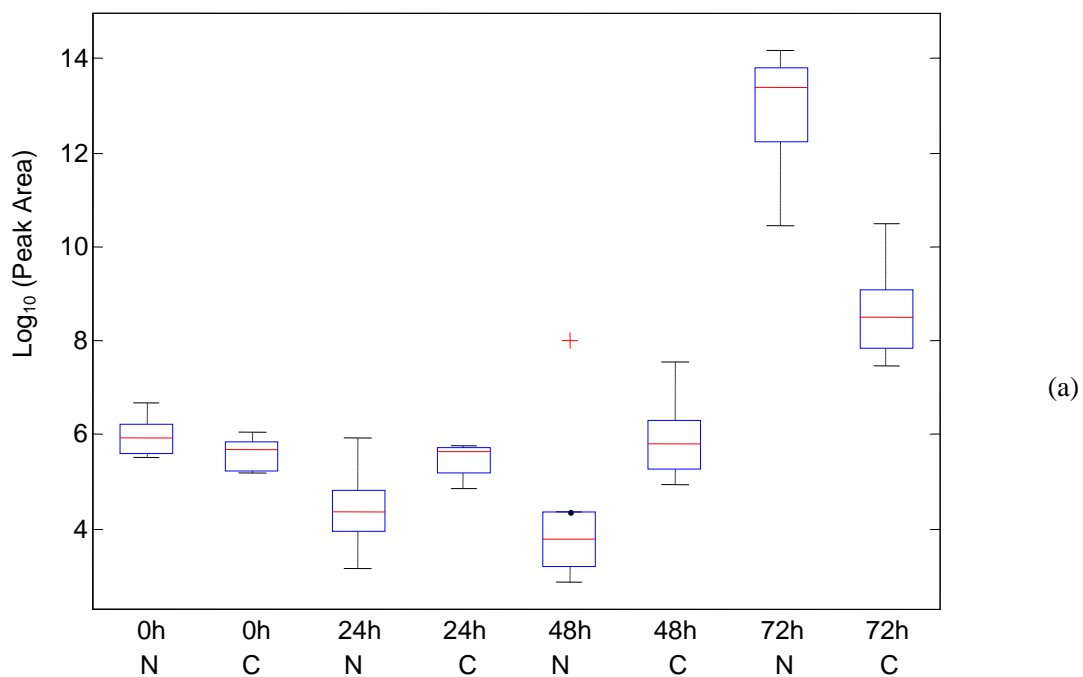


Fig. S-11: (a) Box-whisker plot; (b) Standard mass spectrum; (c) Extracted mass spectrum of the target peak.

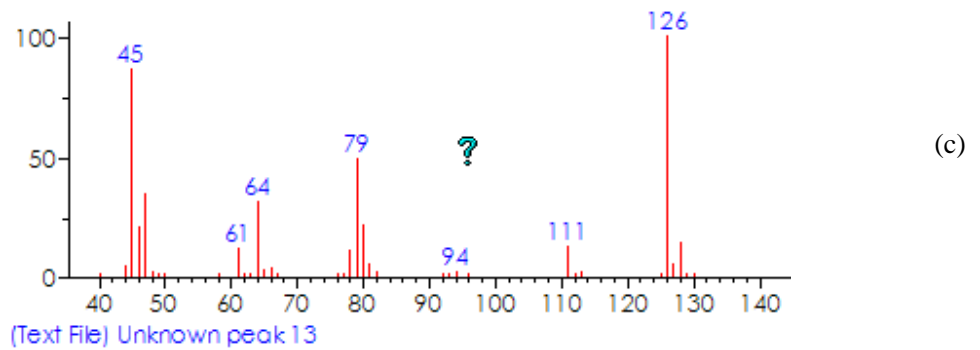
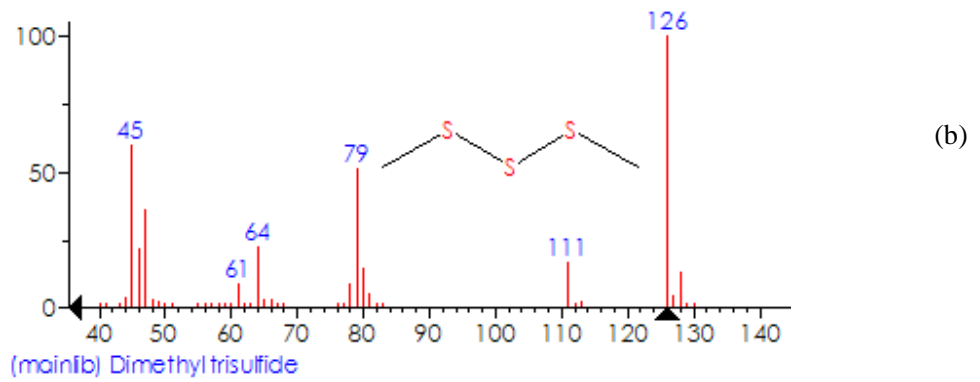
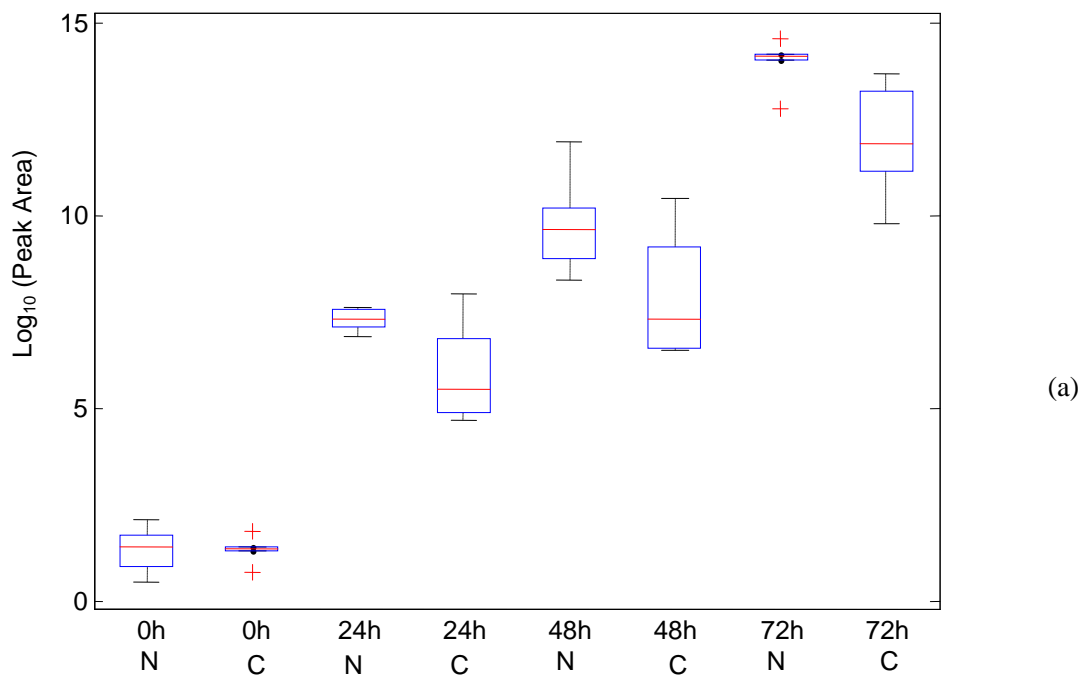


Fig. S-12: (a) Box-whisker plot; (b) Standard mass spectrum; (c) Extracted mass spectrum of the target peak.

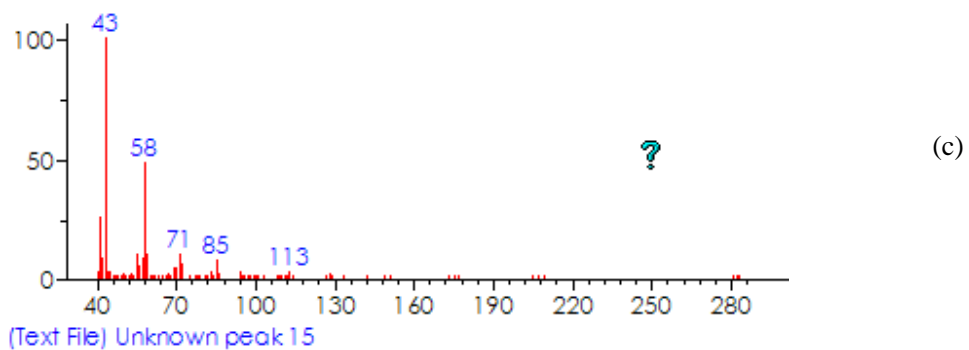
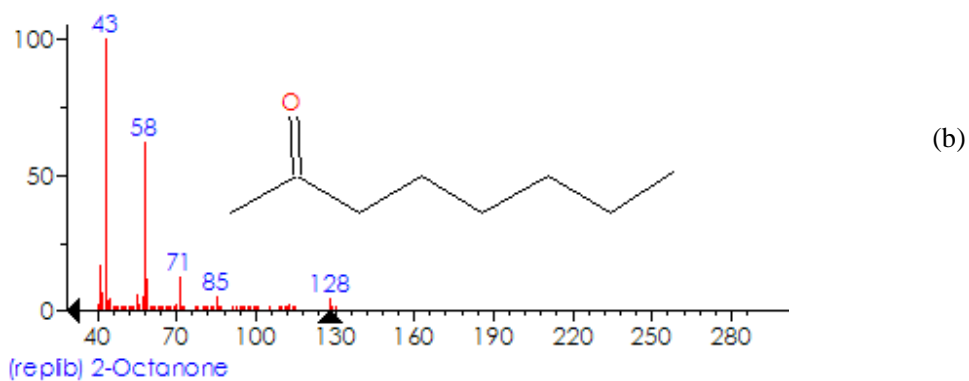
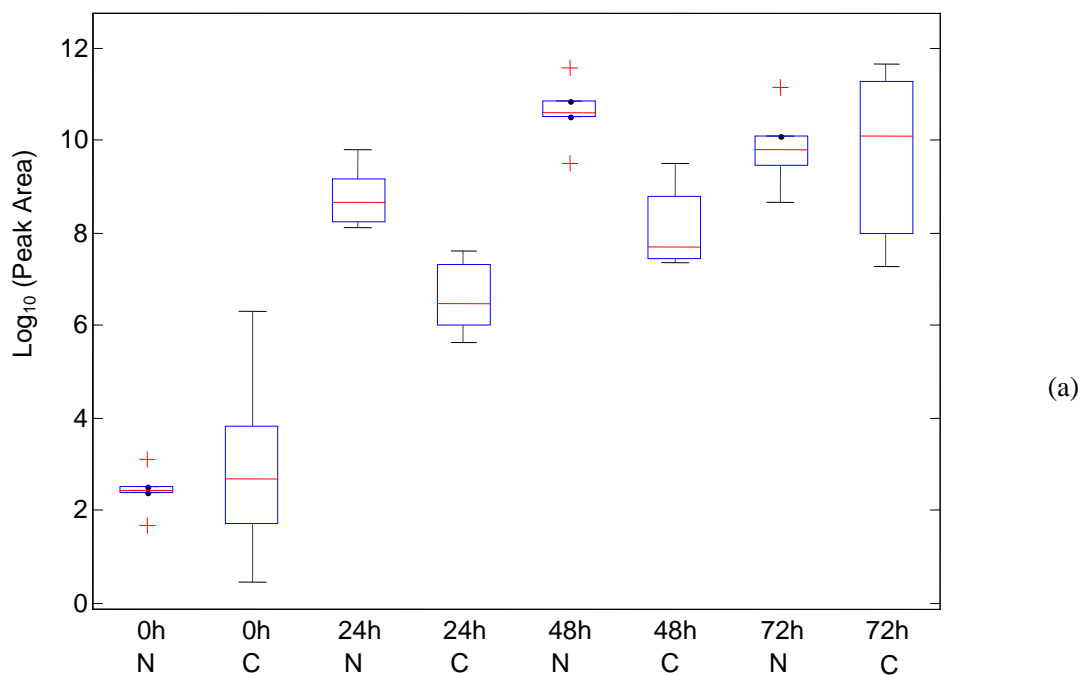


Fig. S-13: (a) Box-whisker plot; (b) Standard mass spectrum; (c) Extracted mass spectrum of the target peak.

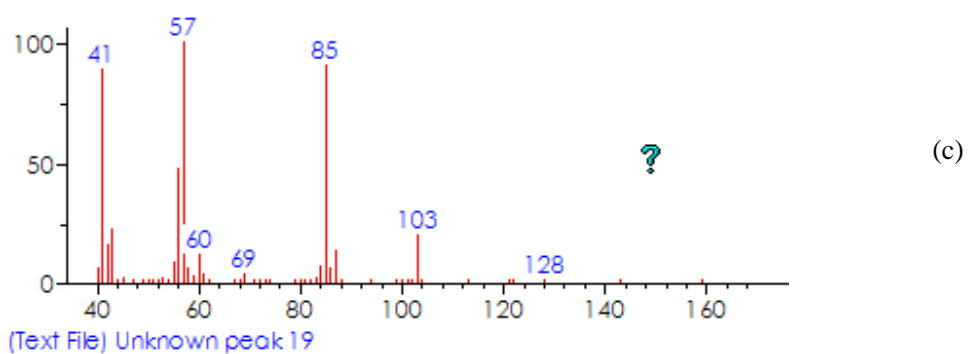
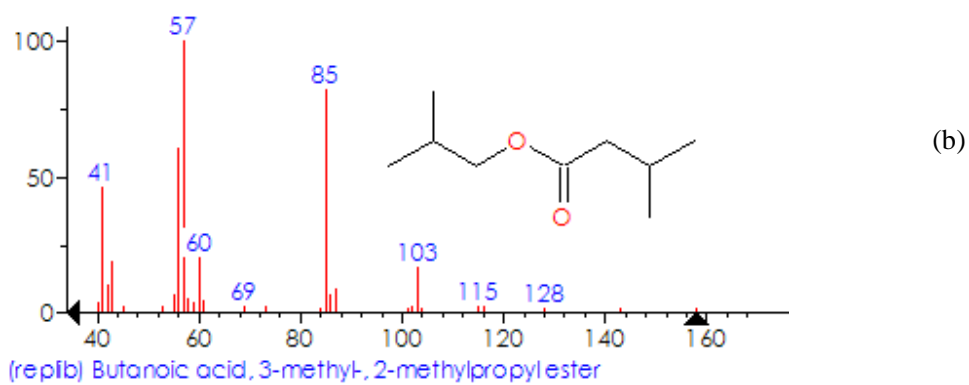
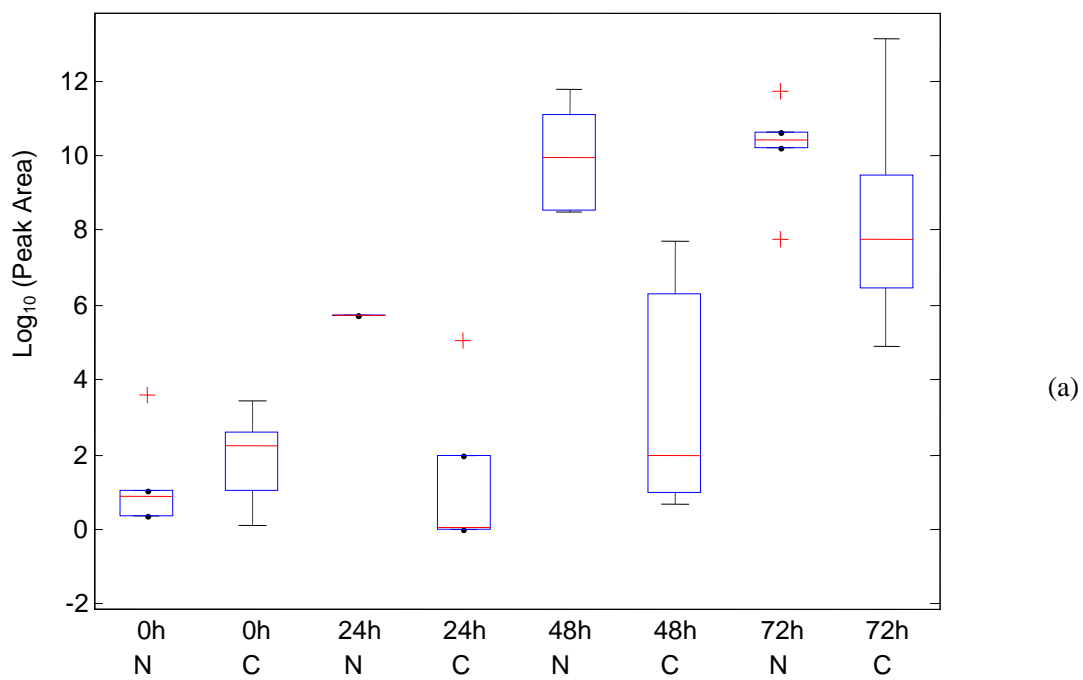


Fig. S-14: (a) Box-whisker plot; (b) Standard mass spectrum; (c) Extracted mass spectrum of the target peak.

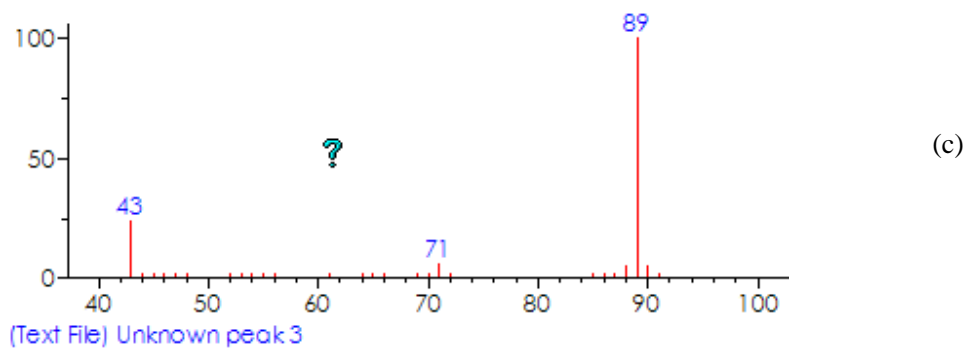
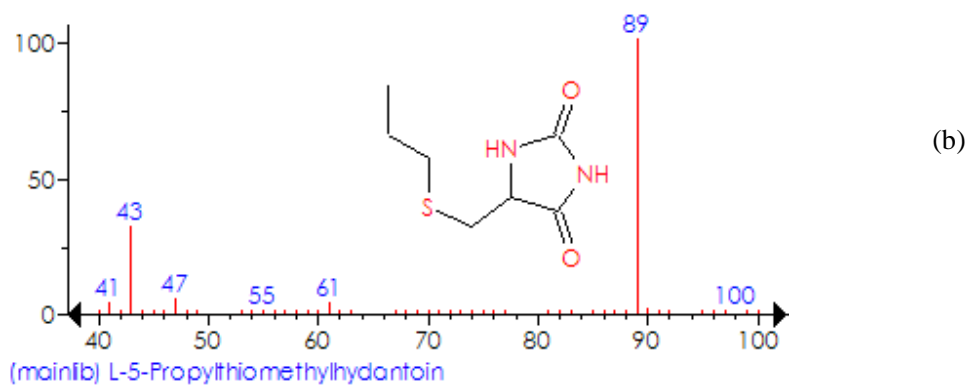
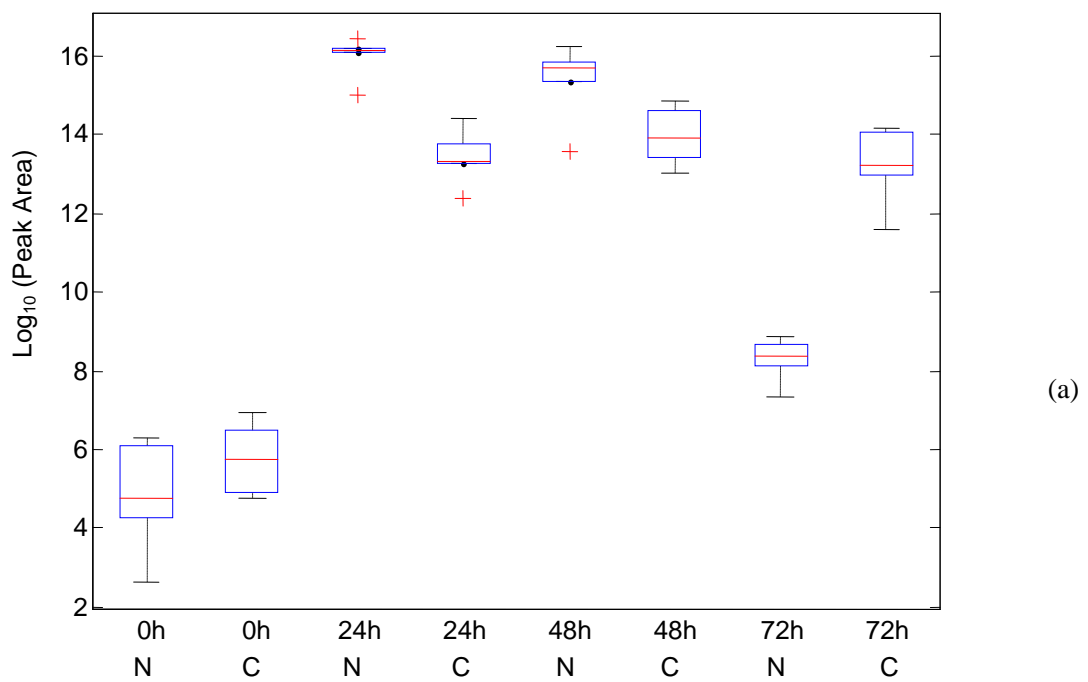


Fig. S-15: (a) Box-whisker plot; (b) Standard mass spectrum; (c) Extracted mass spectrum of the target peak.

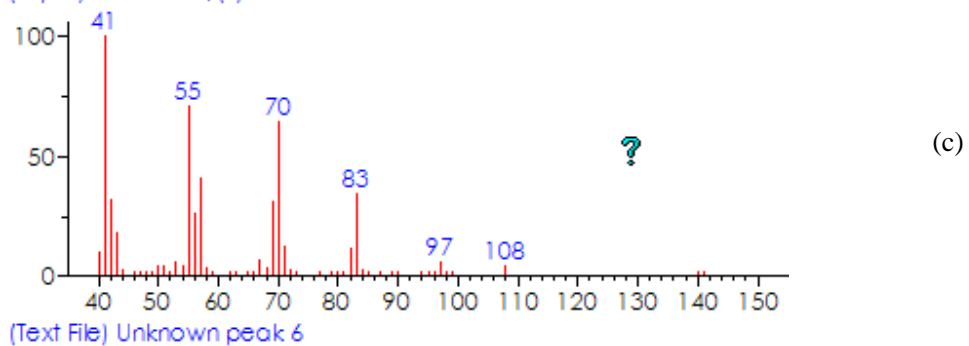
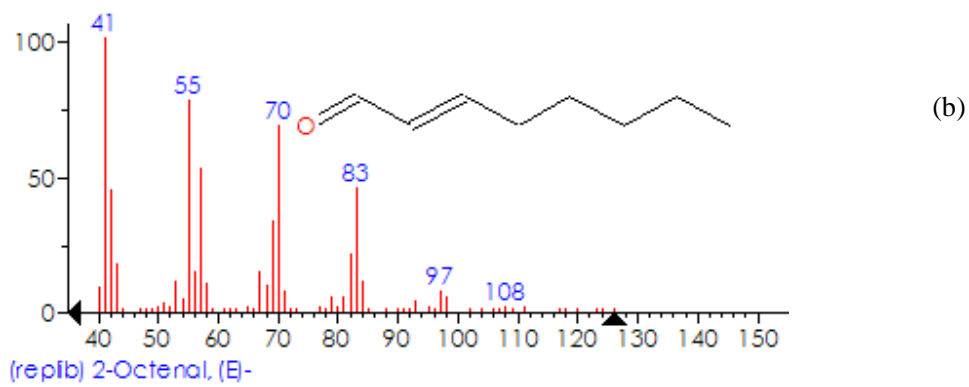
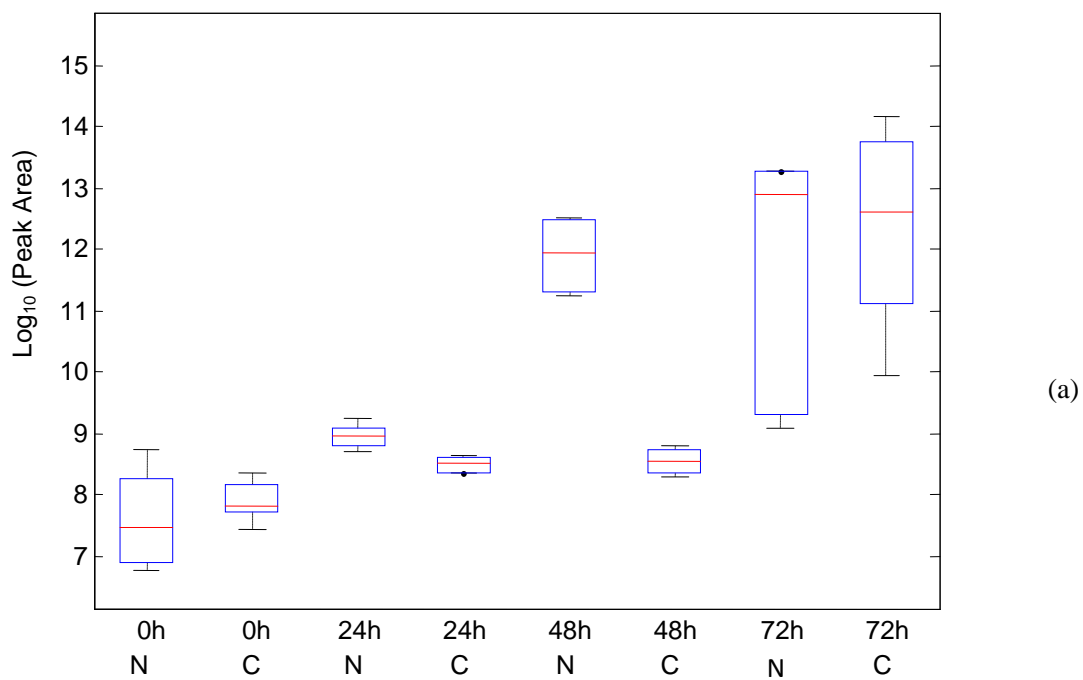


Fig. S-16: (a) Box-whisker plot; (b) Standard mass spectrum; (c) Extracted mass spectrum of the target peak.



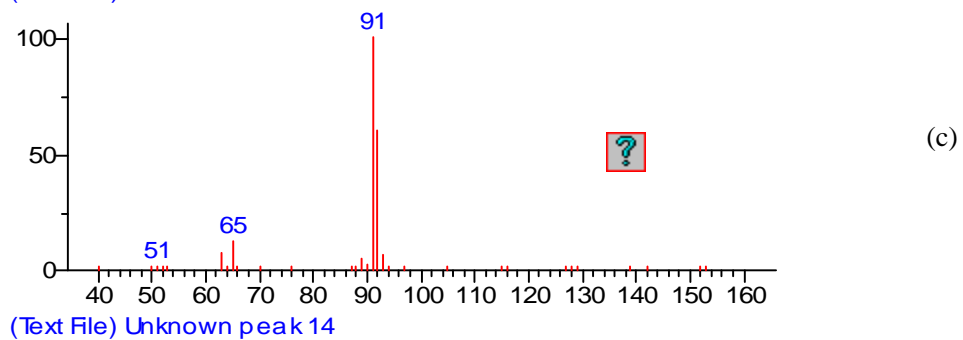
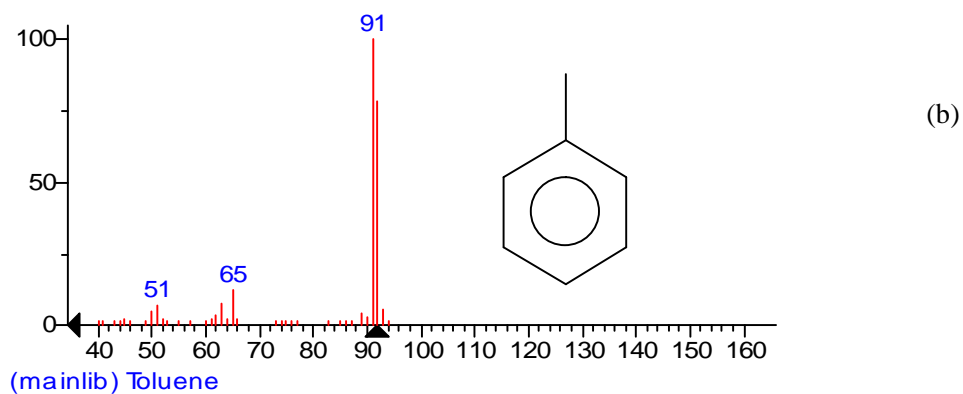
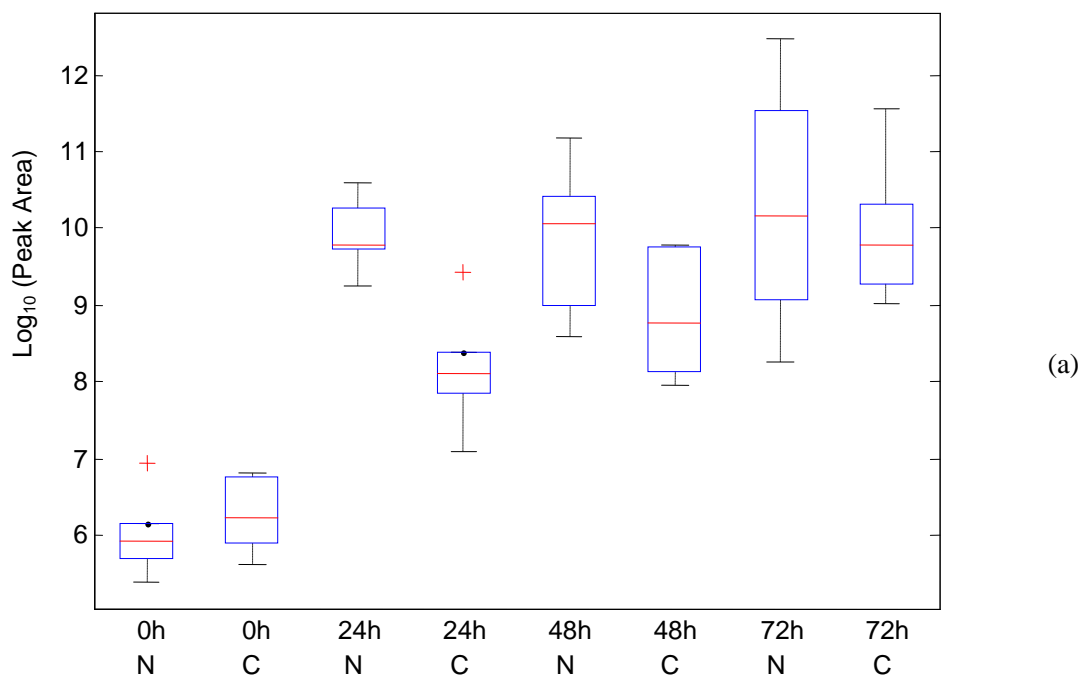


Fig. S-17: (a) Box-whisker plot; (b) Standard mass spectrum; (c) Extracted mass spectrum of the target peak.

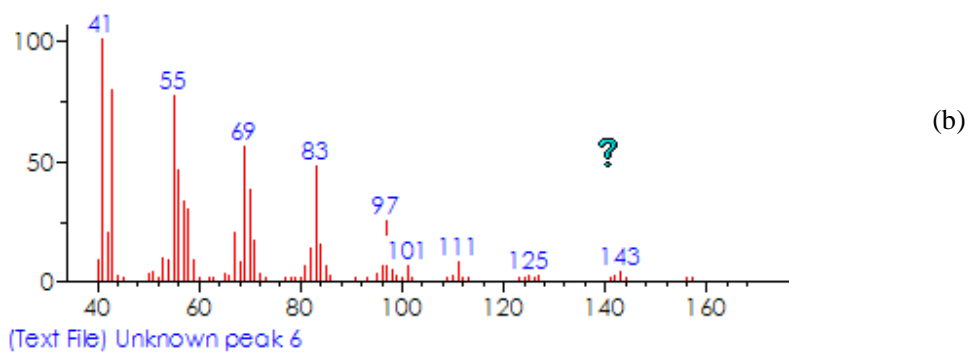
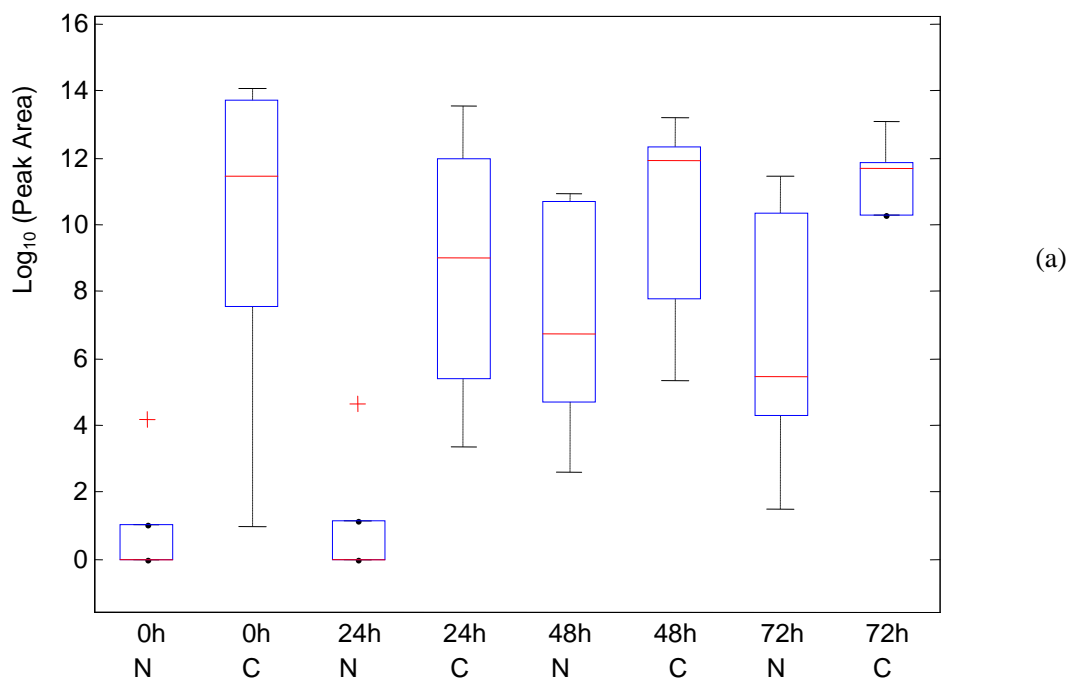


Fig. S-18: (a) Box-whisker plot; (b) Extracted mass spectrum of the target peak. No satisfactory matching can be found.

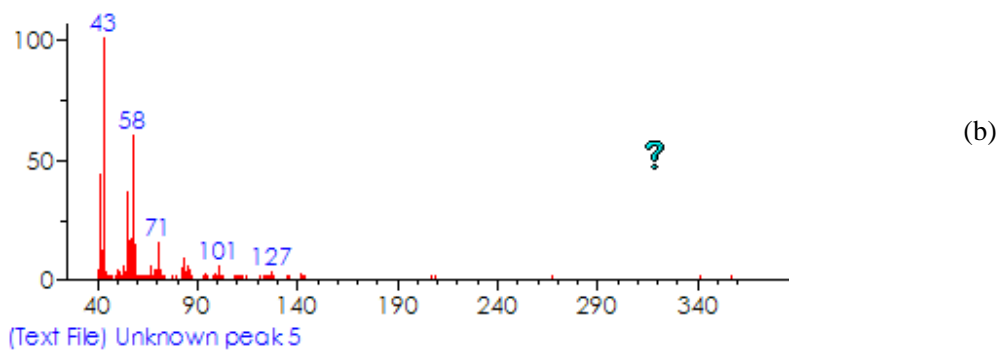
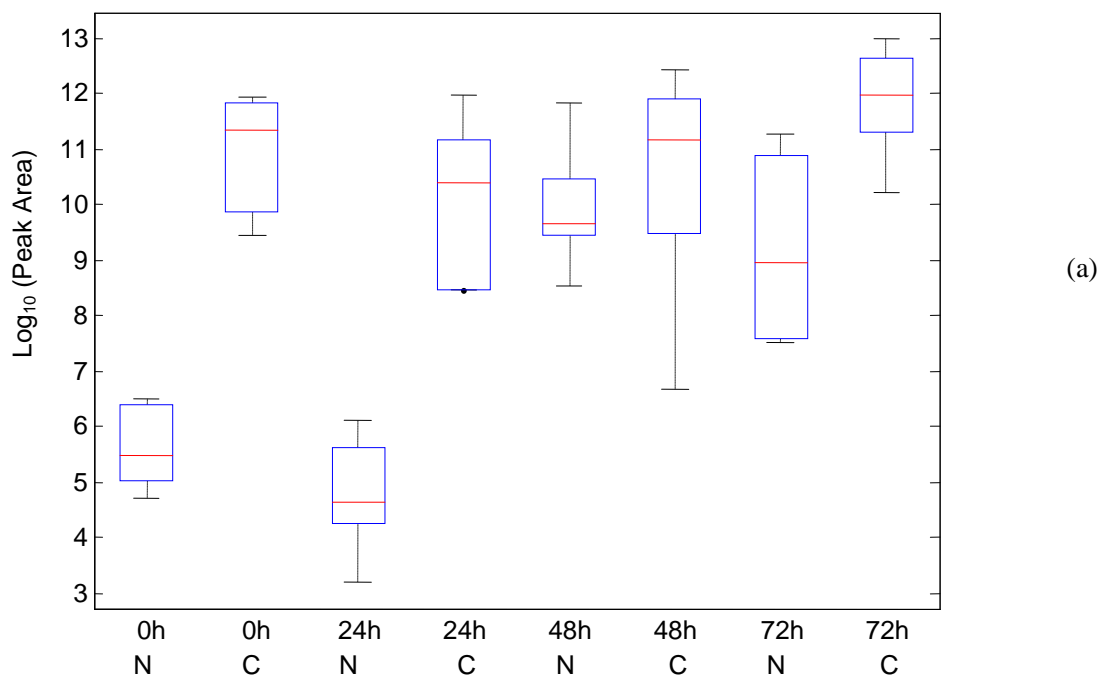


Fig. S-19: (a) Box-whisker plot; (b) Extracted mass spectrum of the target peak. No satisfactory matching can be found.

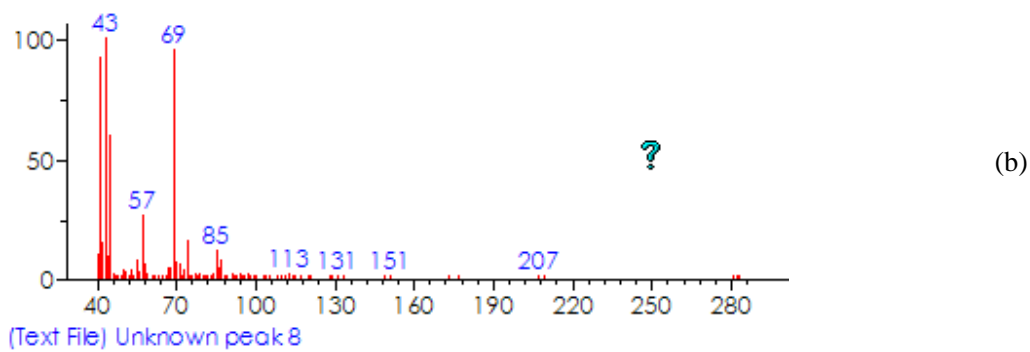
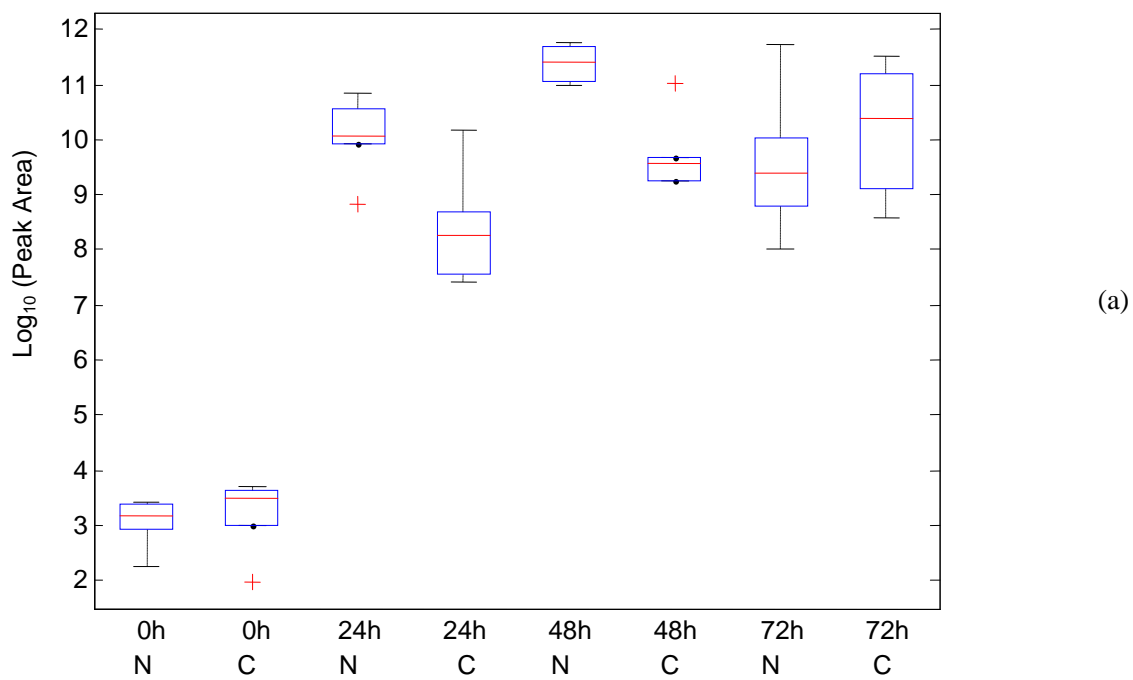


Fig. S-20: (a) Box-whisker plot; (b) Extracted mass spectrum of the target peak. No satisfactory matching can be found.