

Metabolic profiling of meat: assessment of pork hygiene and contamination
with *Salmonella typhimurium* - *Supplementary Information*

Yun Xu¹, William Cheung¹, Catherine L. Winder¹, Warwick B. Dunn² and Royston Goodacre^{1,2,*}.

¹School of Chemistry and ²Manchester Centre for Integrative Systems Biology, Manchester
Interdisciplinary Biocentre, University of Manchester, 131 Princess Street, Manchester, M1 7DN

Correspondence author:

Royston Goodacre

School of Chemistry and Manchester Interdisciplinary Biocentre,

University of Manchester,

131 Princess Street,

Manchester, M1 7ND, UK

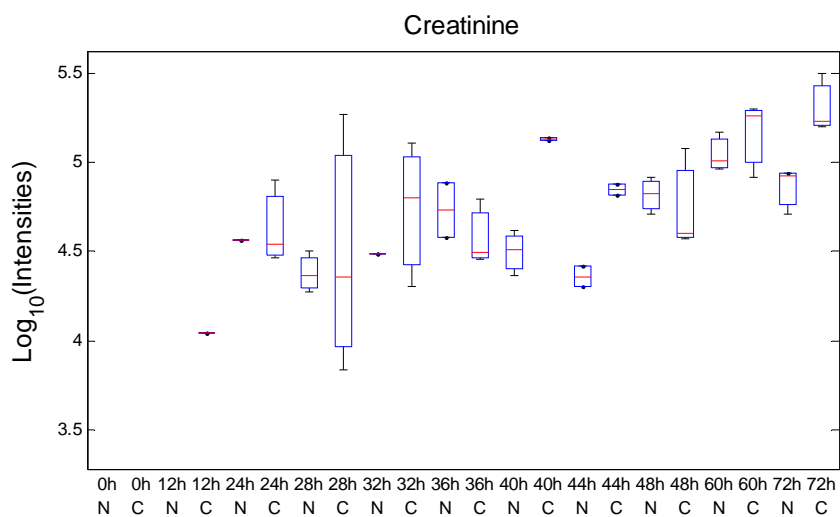
Tel: +44 (0)161 3064480

Fax: +44 (0)161 3064519

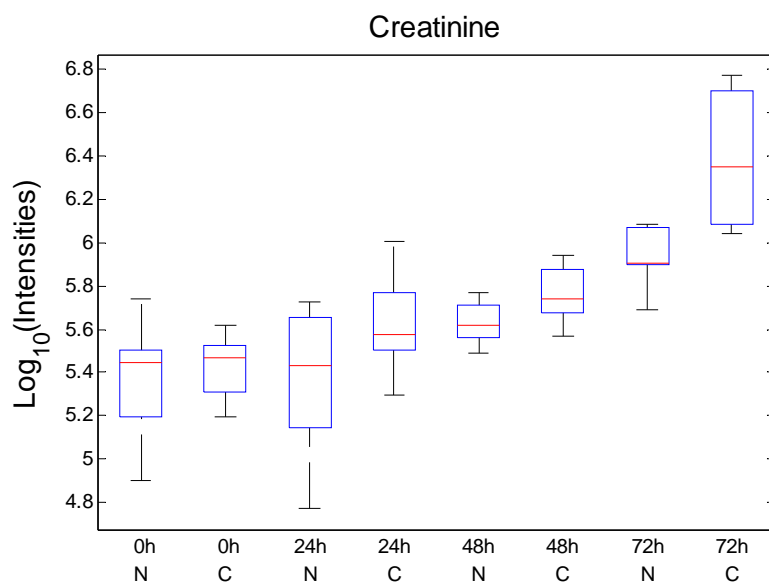
email: roy.goodacre@manchester.ac.uk,

Box-whisker plots of the significant metabolites:

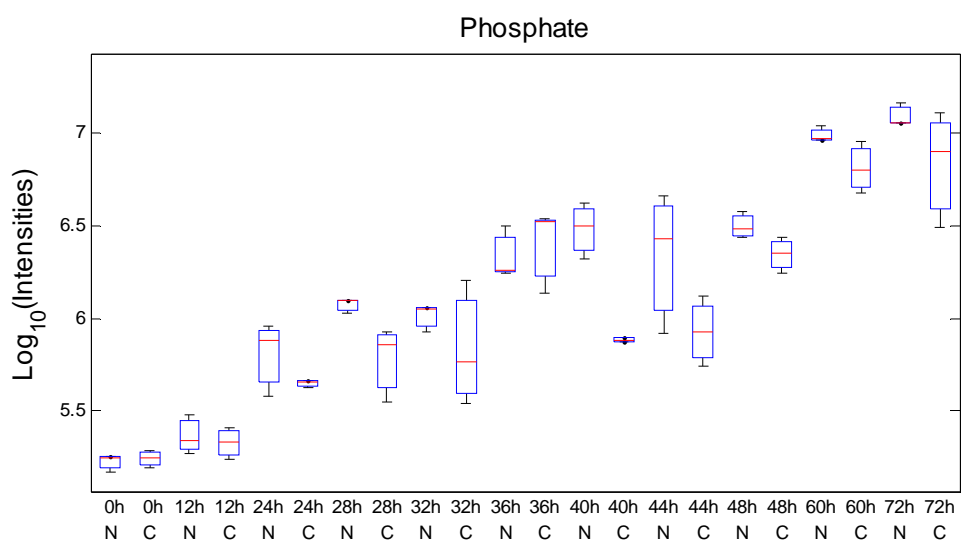
Metabolites identified as significant in both experiments:



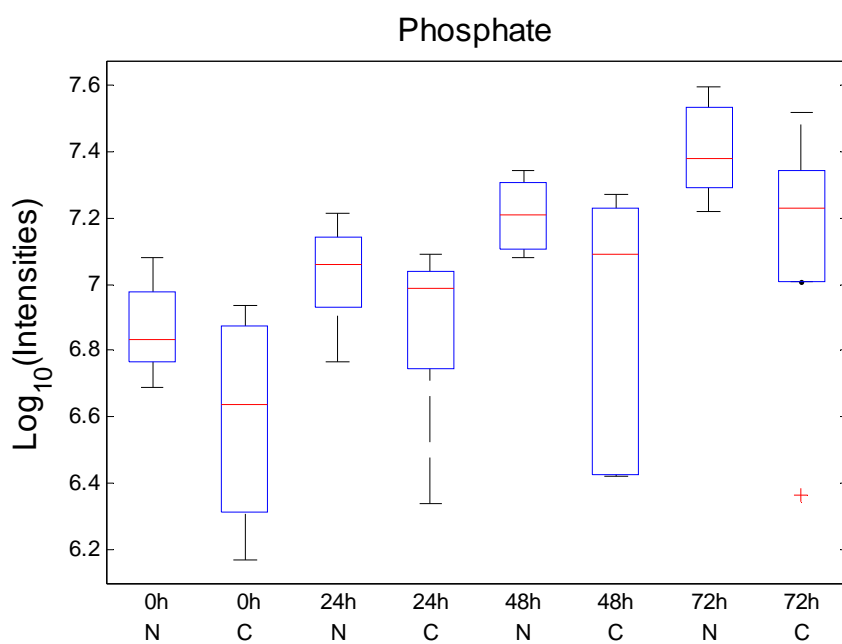
Experiment 1



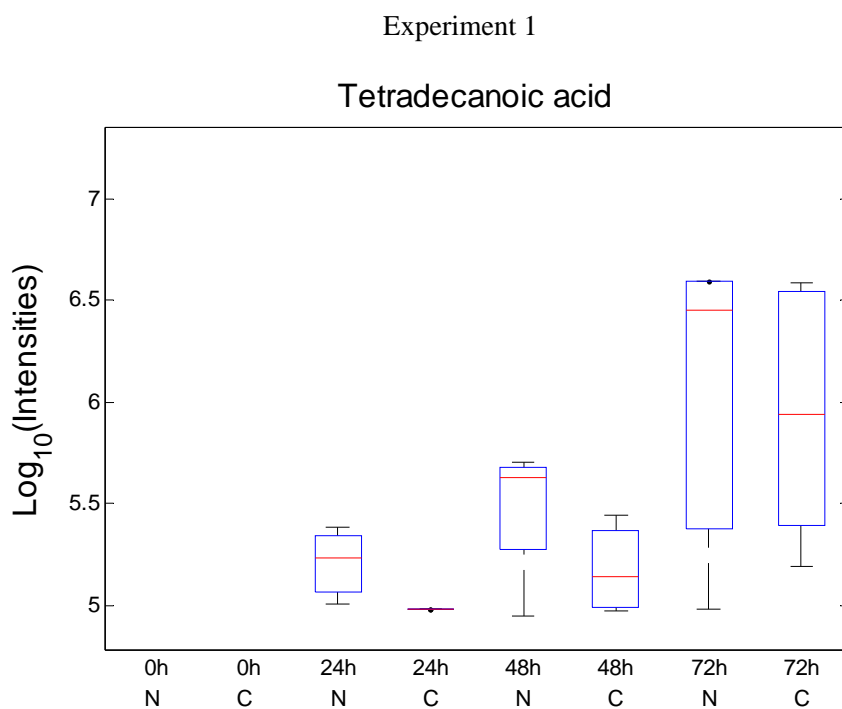
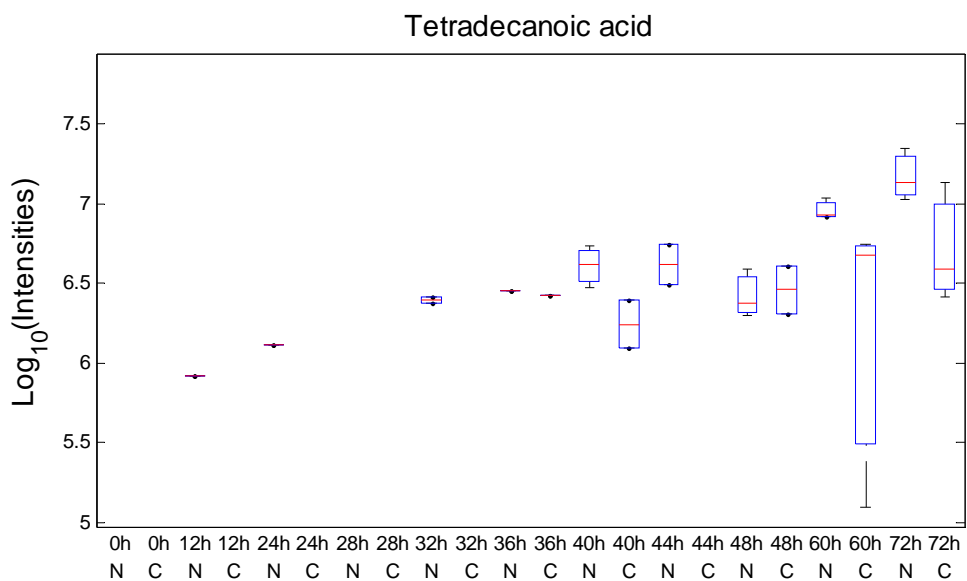
Experiment 2



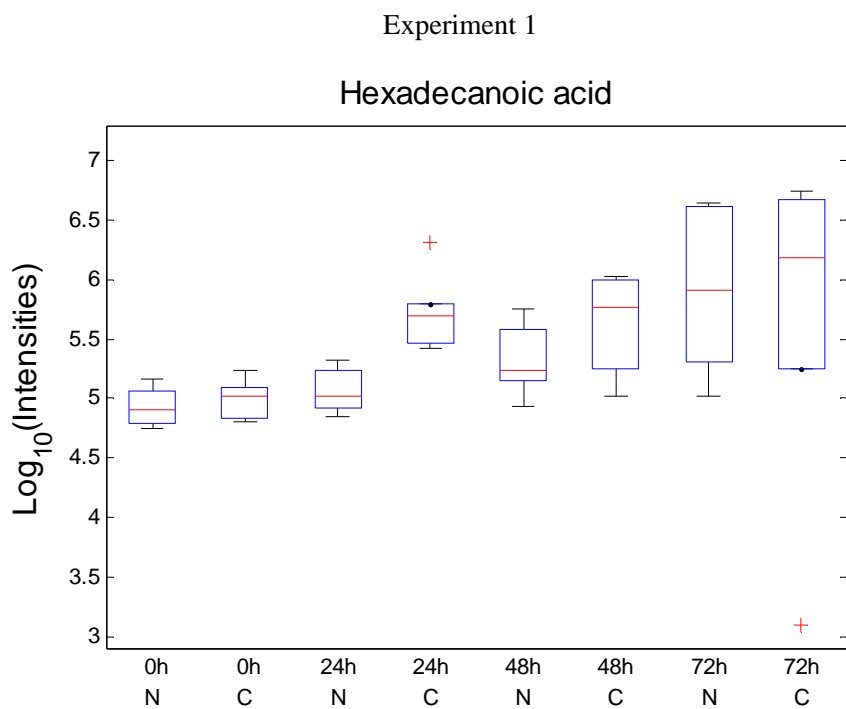
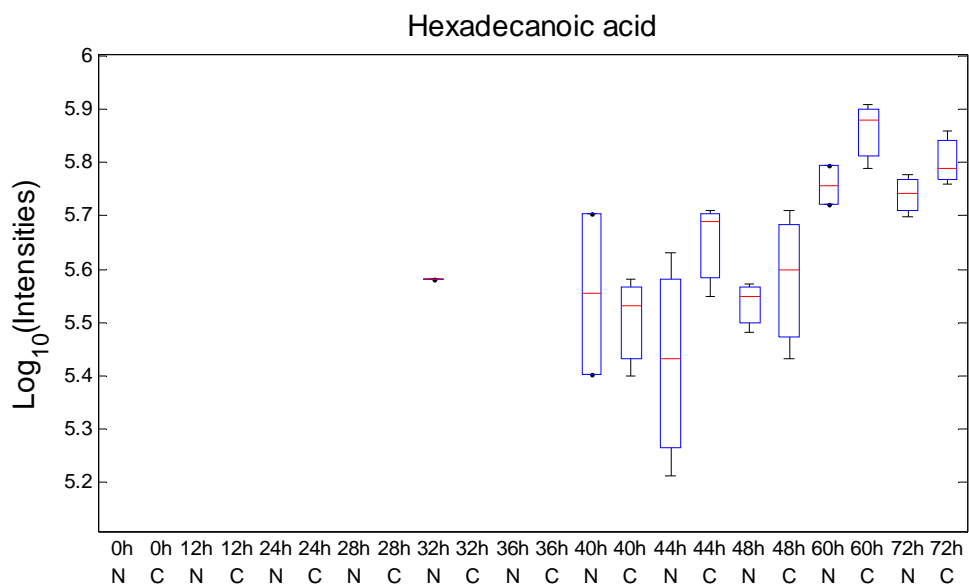
Experiment 1



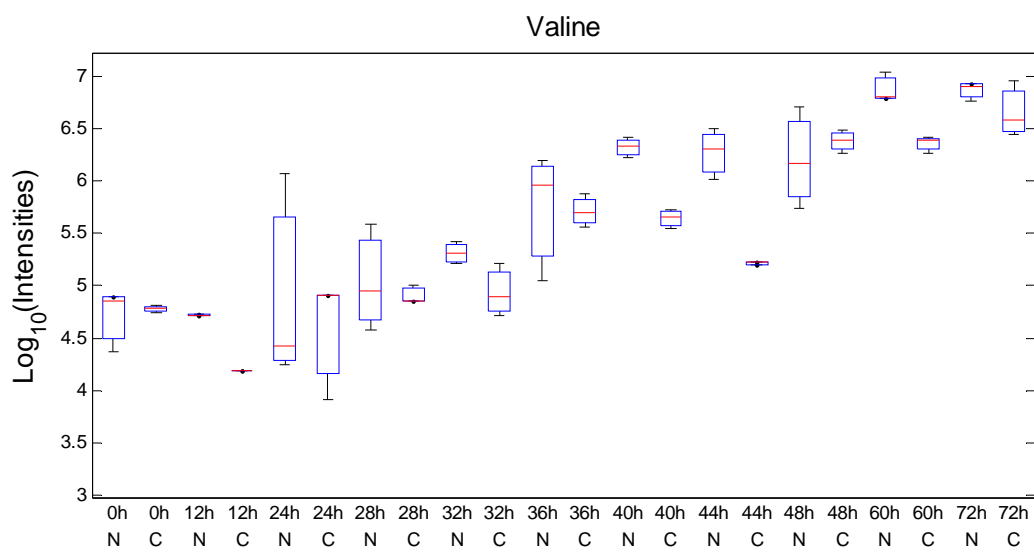
Experiment 2



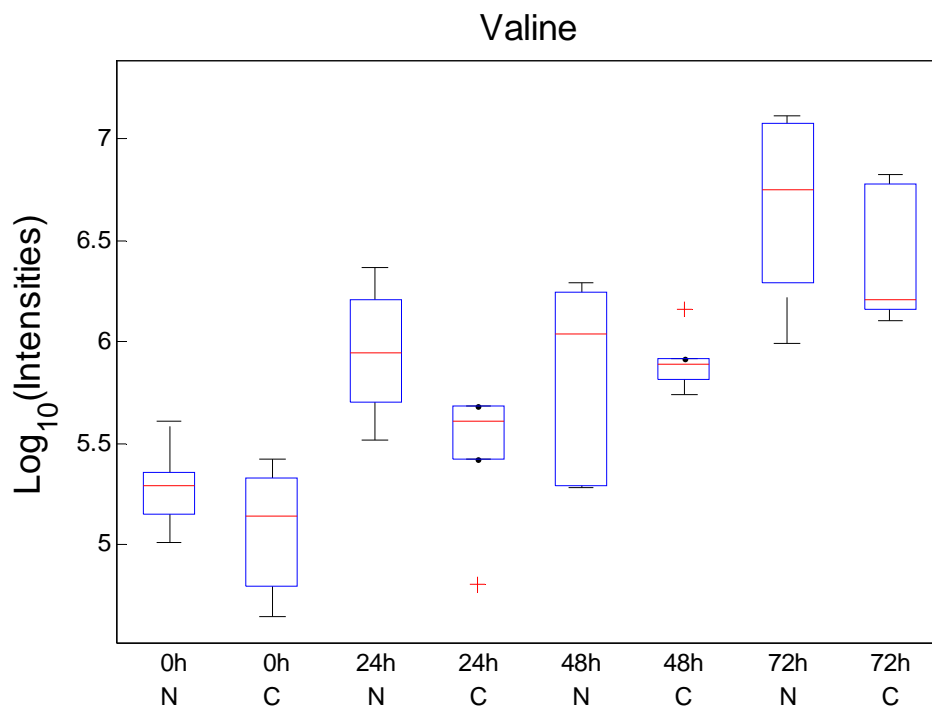
Experiment 2



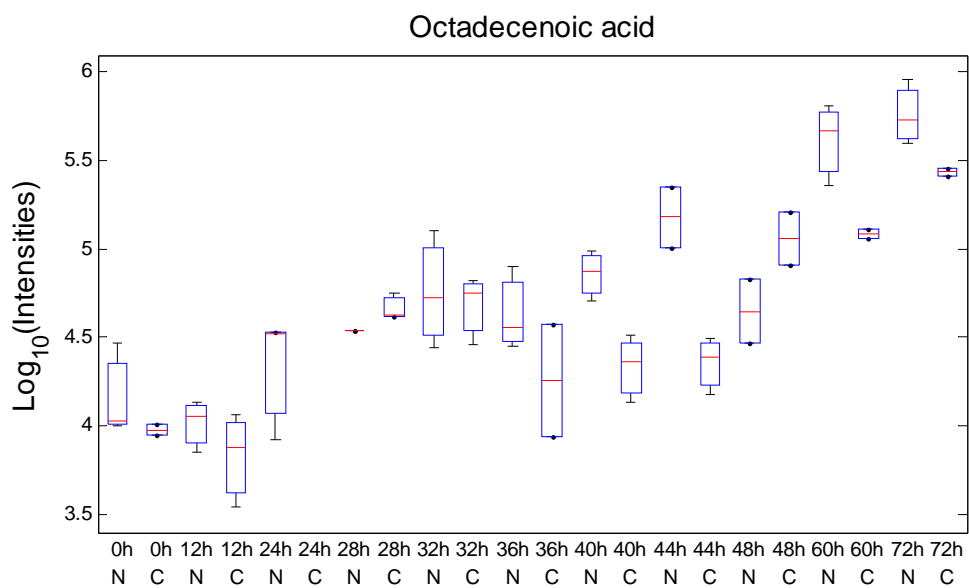
Experiment 2



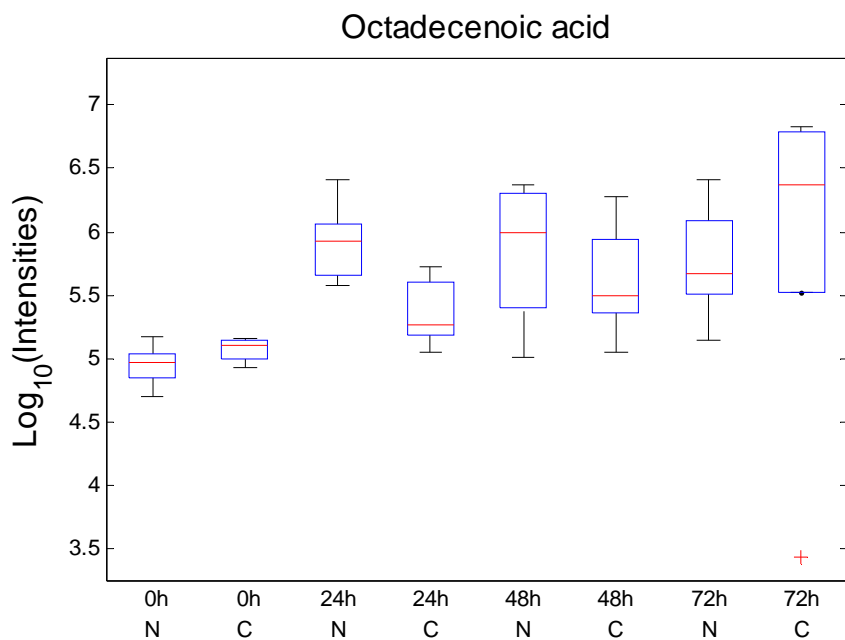
Experiment 1



Experiment 2

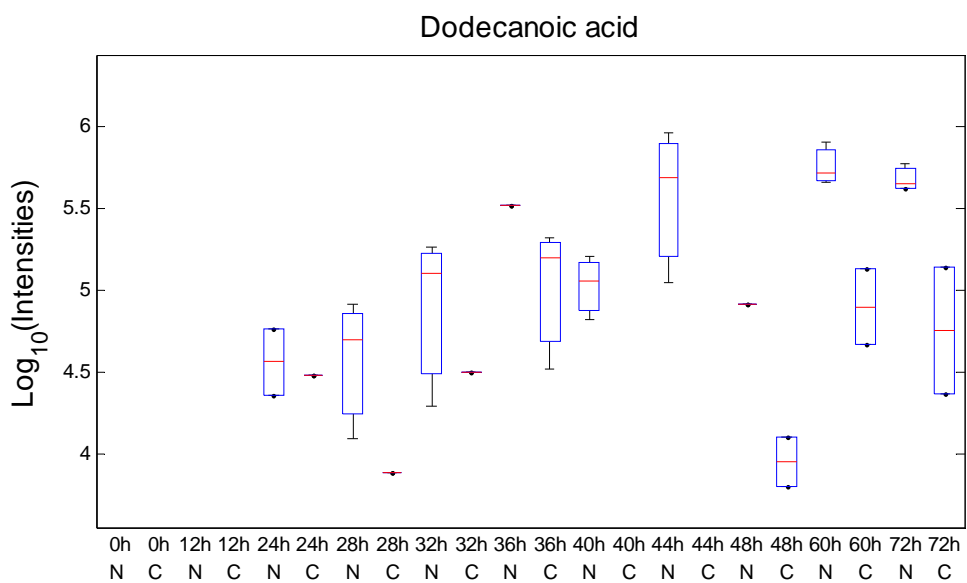
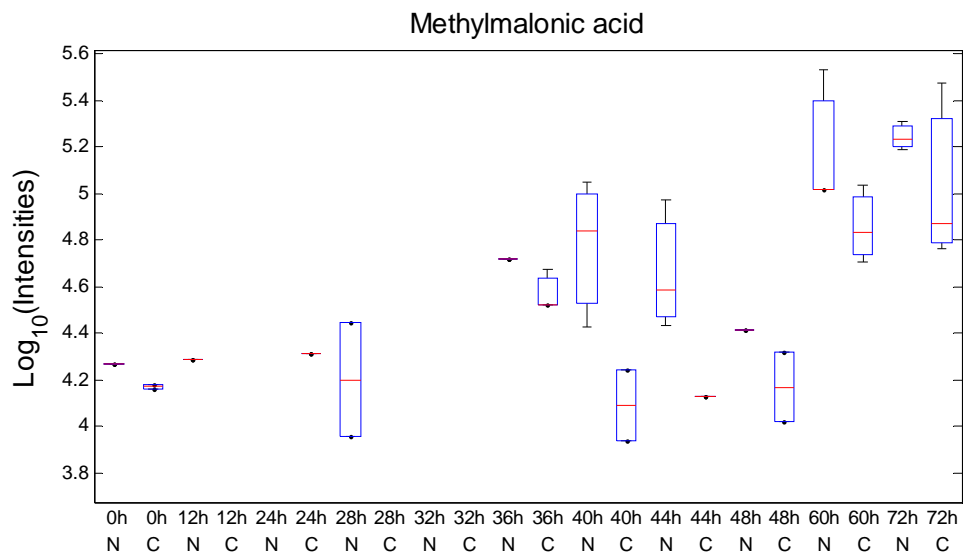


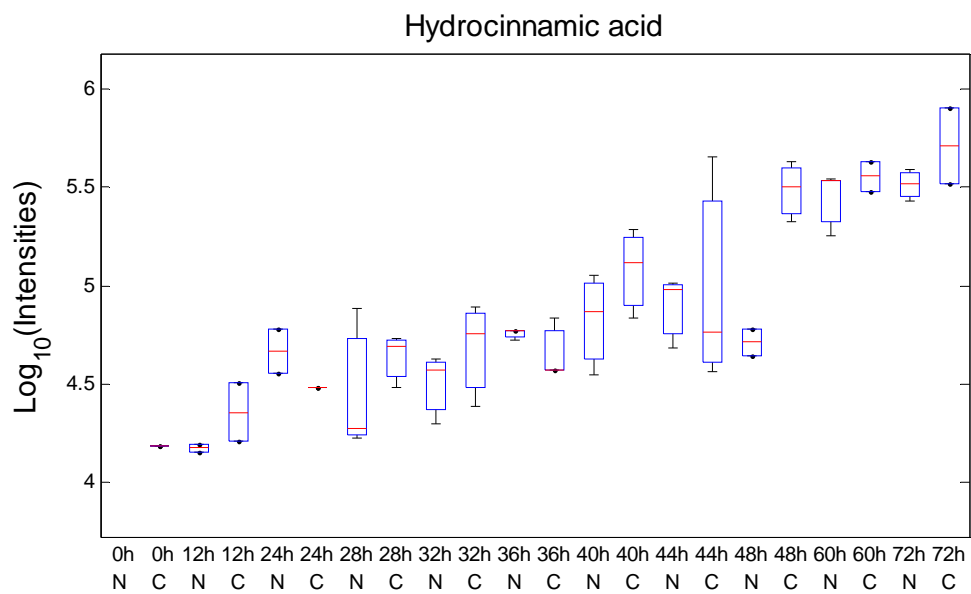
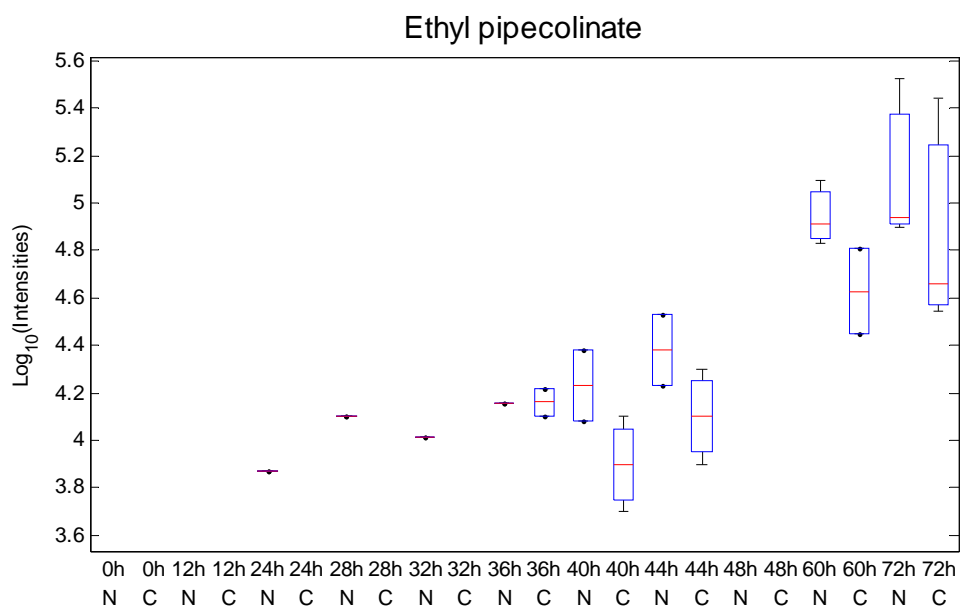
Experiment 1

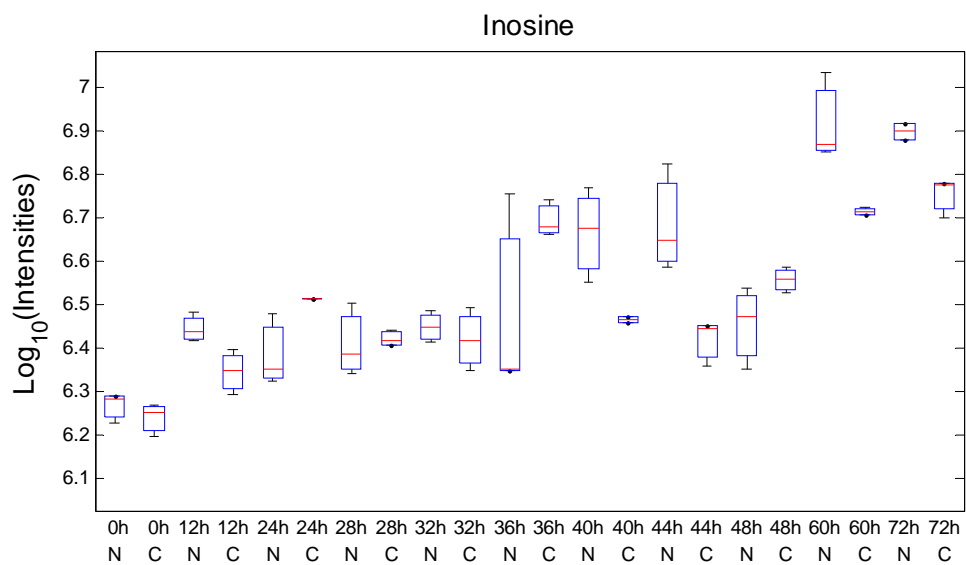
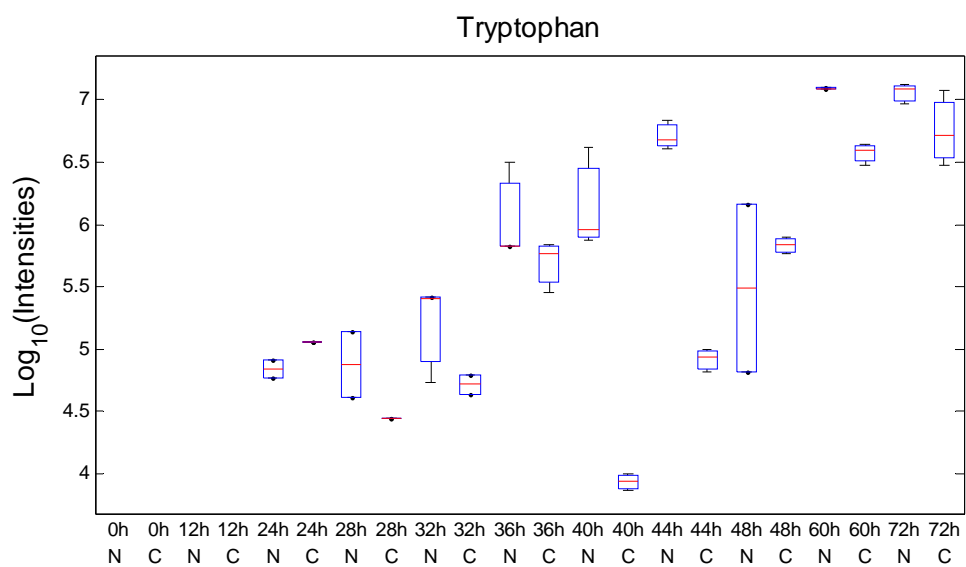


Experiment 2

Metabolites identified as significant in the first experiments only:







Metabolites identified as significant in the second experiments only:

