

**Chemometrics models for overcoming high between subject variability:
applications in clinical metabolic profiling studies – supplementary
information**

Yun Xu^{1,*}, Stephen J. Fowler², Ardeshir Bayat³, Royston Goodacre¹

1. Manchester Institute of Biotechnology & School of Chemistry, University of Manchester, Manchester, United Kingdom

2. University of Manchester and Lancashire Teaching Hospitals NHS Foundation Trust, Manchester, United Kingdom

3. Plastic & Reconstructive Surgery Research, Manchester Institute of Biotechnology, University of Manchester, Manchester, United Kingdom

Corresponding author:

Y. Xu: FAX: +44(0) 161 306 4519, Email: yun.xu-2@manchester.ac.uk

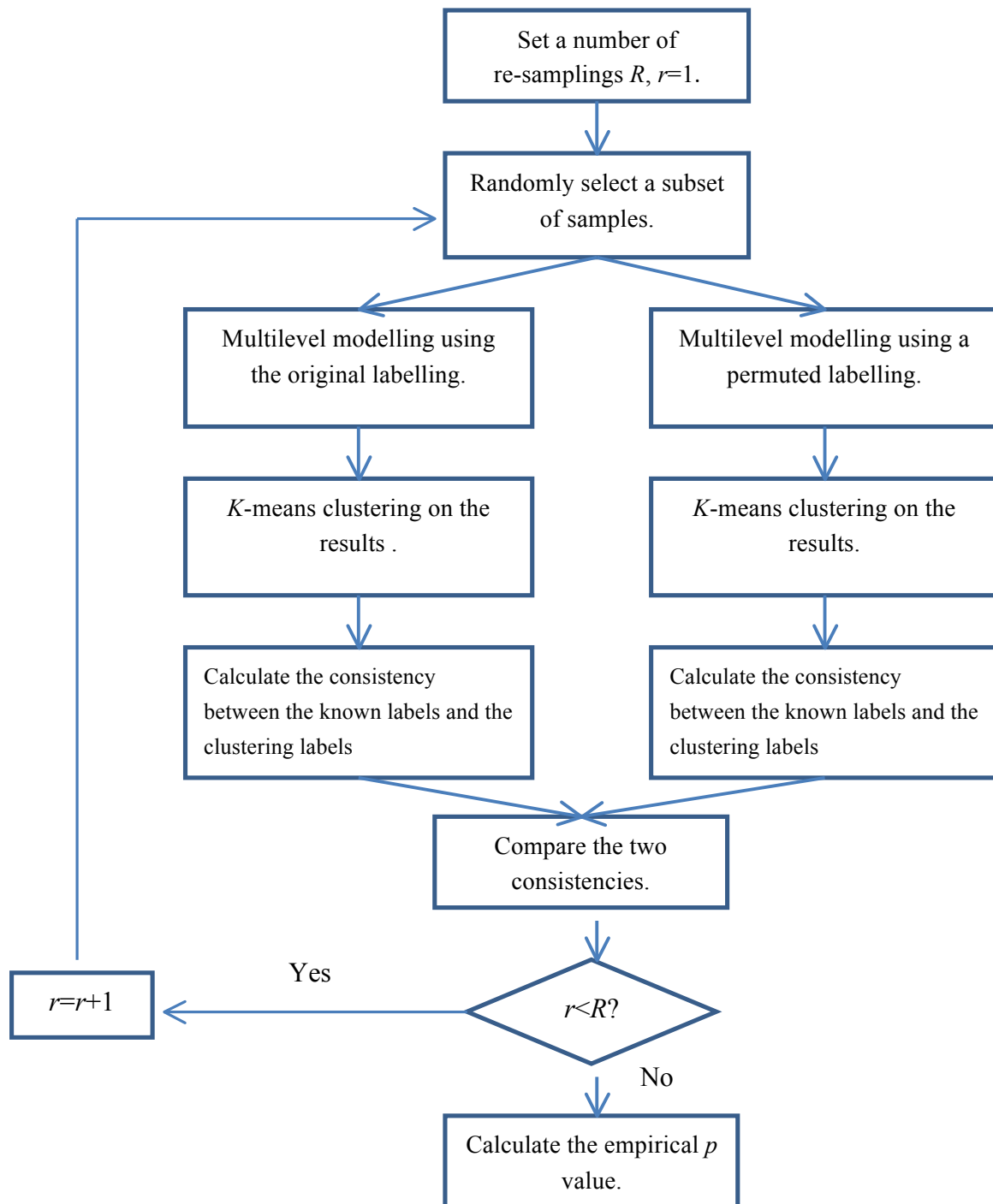


Figure S1: The flowchart of the validation procedure.

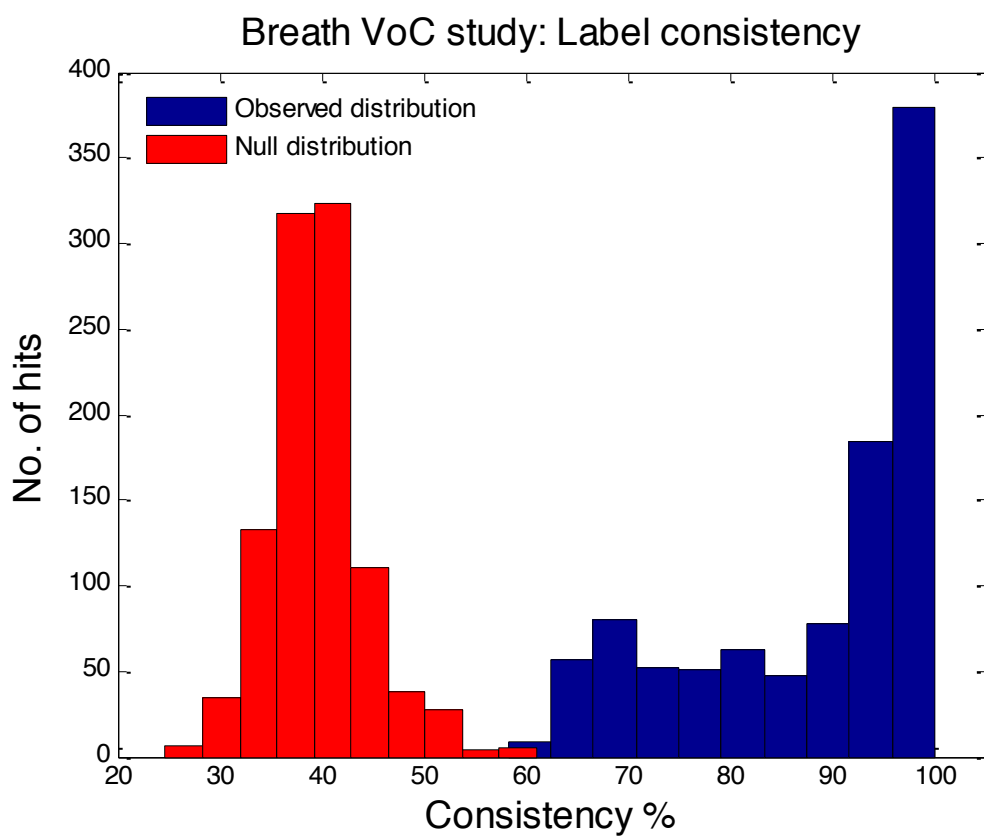


Figure S2: Histogram of the consistency between the true labels and the labels identified by the cluster analysis.

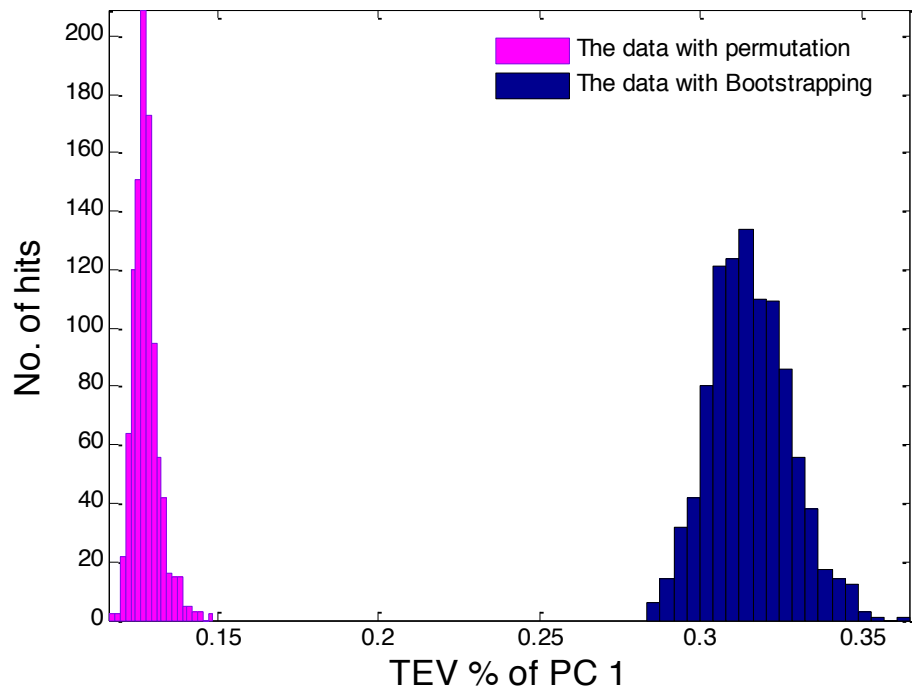


Figure S3: The histogram of the total explained variations (TEV) % of the first PC.